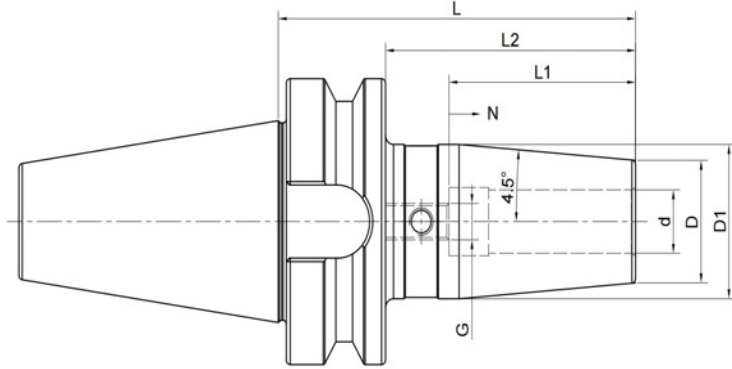


# BT热缩刀柄标准型 BT Shrink fit chuck 4.5°



型号Cat No	d	D	D1	L	L2	L1	N	G
BT30-SF03-80	3	15	20	80	58			
BT30-SF04-80	4	15	20	80	58			
BT30-SF05-80	5	15	20	80	58			
BT30-SF06-80	6	21	27	80	58	36	10	M5
BT30-SF08-80	8	21	27	80	58	36	10	M6
BT30-SF10-80	10	24	32	80	58	42	10	M8x1
BT30-SF12-80	12	24	32	80	58	47	10	M10x1
BT30-SF14-80	14	27	34	80	58	47	10	M10x1
BT30-SF16-80	16	27	34	80	58	50	10	M12x1
BT30-SF18-80	18	33	42	80	58	50	10	M12x1
BT30-SF20-80	20	33	42	80	58	52	10	M16x1
BT40-SF03-80	3	15	20	80	53			
BT40-SF04-80	4	15	20	80	53			
BT40-SF05-80	5	15	20	80	53			
BT40-SF06-90	6	21	27	90	63	36	10	M5
BT40-SF08-90	8	21	27	90	63	36	10	M6
BT40-SF10-90	10	24	32	90	63	42	10	M8x1
BT40-SF12-90	12	24	32	90	63	47	10	M10x1
BT40-SF14-90	14	27	34	90	63	47	10	M10x1
BT40-SF16-90	16	27	34	90	63	50	10	M12x1
BT40-SF18-90	18	33	42	90	63	50	10	M12x1
BT40-SF20-90	20	33	42	90	63	52	10	M16x1
BT40-SF25-100	25	44	53	100	73	58	10	M16x1
BT40-SF32-100	32	44	53	100	73	62	10	M16x1

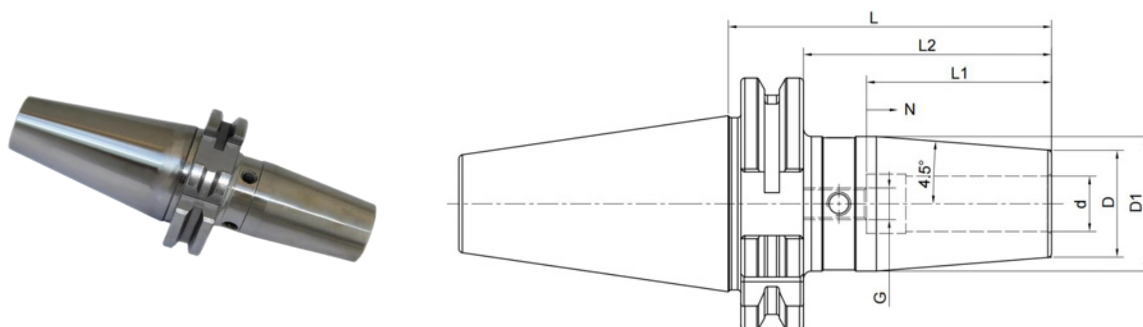
型号Cat No	d	D	D1	L	L2	L1	N	G
BT40-SF06-120	6	21	27	120	93	36	10	M5
BT40-SF08-120	8	21	27	120	93	36	10	M6
BT40-SF10-120	10	24	32	120	93	42	10	M8x1
BT40-SF12-120	12	24	32	120	93	47	10	M10x1
BT40-SF14-120	14	27	34	120	93	47	10	M10x1
BT40-SF16-120	16	27	34	120	93	50	10	M12x1
BT40-SF18-120	18	33	42	120	93	50	10	M12x1
BT40-SF20-120	20	33	42	120	93	52	10	M16x1
BT40-SF25-120	25	44	53	120	93	58	10	M16x1
BT40-SF32-120	32	44	53	120	93	62	10	M16x1
BT40-SF06-160	6	21	32	160	133	36	10	M5
BT40-SF08-160	8	21	32	160	133	36	10	M6
BT40-SF10-160	10	24	34	160	133	42	10	M8x1
BT40-SF12-160	12	24	34	160	133	47	10	M10x1
BT40-SF14-160	14	27	42	160	133	47	10	M10x1
BT40-SF16-160	16	27	42	160	133	50	10	M12x1
BT40-SF18-160	18	33	50	160	133	50	10	M12x1
BT40-SF20-160	20	33	50	160	133	52	10	M16x1
BT40-SF25-160	25	44	53	160	133	58	10	M16x1
BT40-SF32-160	32	44	53	160	133	62	10	M16x1
BT40-SF06-200	6	21	32	200	173	36	10	M5
BT40-SF08-200	8	21	32	200	173	36	10	M6
BT40-SF10-200	10	24	34	200	173	42	10	M8x1
BT40-SF12-200	12	24	34	200	173	47	10	M10x1
BT40-SF14-200	14	27	42	200	173	47	10	M10x1
BT40-SF16-200	16	27	42	200	173	50	10	M12x1
BT40-SF18-200	18	33	50	200	173	50	10	M12x1
BT40-SF20-200	20	33	50	200	173	52	10	M16x1
BT40-SF25-200	25	44	53	200	173	58	10	M16x1
BT40-SF32-200	32	44	53	200	173	62	10	M16x1

型号Cat No	d	D	D1	L	L2	L1	N	G
BT50-SF04-100	4	15	20	100	62	-	-	-
BT50-SF05-100	5	15	20	100	62	-	-	-
BT50-SF06-100	6	21	27	100	62	36	10	M5
BT50-SF08-100	8	21	27	100	62	36	10	M6
BT50-SF10-100	10	24	32	100	62	42	10	M8x1
BT50-SF12-100	12	24	32	100	62	47	10	M10x1
BT50-SF14-100	14	27	34	100	62	47	10	M10x1
BT50-SF16-100	16	27	34	100	62	50	10	M12x1
BT50-SF18-100	18	33	42	100	62	50	10	M12x1
BT50-SF20-100	20	33	42	100	62	52	10	M16x1
BT50-SF25-110	25	44	53	110	72	58	10	M16x1
BT50-SF32-110	32	44	53	110	72	62	10	M16x1
BT50-SF06-120	6	21	27	120	82	36	10	M5
BT50-SF08-120	8	21	27	120	82	36	10	M6
BT50-SF10-120	10	24	32	120	82	42	10	M8x1
BT50-SF12-120	12	24	32	120	82	47	10	M10x1
BT50-SF14-120	14	27	34	120	82	47	10	M10x1
BT50-SF16-120	16	27	34	120	82	50	10	M12x1
BT50-SF18-120	18	33	42	120	82	50	10	M12x1
BT50-SF20-120	20	33	42	120	82	52	10	M16x1
BT50-SF25-120	25	44	53	120	82	58	10	M16x1
BT50-SF32-120	32	44	53	120	82	62	10	M16x1

BT50-SF06-160	6	21	32	160	122	36	10	M5
BT50-SF08-160	8	21	32	160	122	36	10	M6
BT50-SF10-160	10	24	34	160	122	42	10	M8x1
BT50-SF12-160	12	24	34	160	122	47	10	M10x1
BT50-SF14-160	14	27	42	160	122	47	10	M10x1
BT50-SF16-160	16	27	42	160	122	50	10	M12x1
BT50-SF18-160	18	33	50	160	122	50	10	M12x1
BT50-SF20-160	20	33	50	160	122	52	10	M16x1
BT50-SF25-160	25	44	60	160	122	58	10	M16x1
BT50-SF32-160	32	44	60	160	122	62	10	M16x1
BT50-SF06-200	6	21	32	200	162	36	10	M5
BT50-SF08-200	8	21	32	200	162	36	10	M6
BT50-SF10-200	10	24	34	200	162	42	10	M8x1
BT50-SF12-200	12	24	34	200	162	47	10	M10x1
BT50-SF14-200	14	27	42	200	162	47	10	M10x1
BT50-SF16-200	16	27	42	200	162	50	10	M12x1
BT50-SF18-200	18	33	50	200	162	50	10	M12x1
BT50-SF20-200	20	33	50	200	162	52	10	M16x1
BT50-SF25-200	25	44	60	200	162	58	10	M16x1

SK30-SF03-80	3	15	20	80	60.9	-	-	-
SK30-SF04-80	4	15	20	80	60.9	-	-	-
SK30-SF05-80	5	15	20	80	60.9	-	-	-
SK30-SF06-80	6	21	27	80	60.9	36	10	M5
SK30-SF08-80	8	21	27	80	60.9	36	10	M6
SK30-SF10-80	10	24	32	80	60.9	42	10	M8x1
SK30-SF12-80	12	24	32	80	60.9	47	10	M10x1
SK30-SF14-80	14	27	34	80	60.9	47	10	M10x1
SK30-SF16-80	16	27	34	80	60.9	50	10	M12x1
SK30-SF18-80	18	33	42	80	60.9	50	10	M12x1
SK30-SF20-80	20	33	42	80	60.9	52	10	M16x1
SK30-SF04-120	4	15	20	120	100.9	-	-	-
SK30-SF05-120	5	15	20	120	100.9	-	-	-
SK30-SF06-120	6	21	27	120	100.9	36	10	M5
SK30-SF08-120	8	21	27	120	100.9	36	10	M6
SK30-SF10-120	10	24	32	120	100.9	42	10	M8x1
SK30-SF12-120	12	24	32	120	100.9	47	10	M10x1
SK30-SF16-120	16	27	34	120	100.9	50	10	M12x1
SK40-SF03-80	3	15	20	80	60.9	-	-	-
SK40-SF04-80	4	15	20	80	60.9	-	-	-
SK40-SF05-80	5	15	20	80	60.9	-	-	-
SK40-SF06-80	6	21	27	80	60.9	36	10	M5
SK40-SF08-80	8	21	27	80	60.9	36	10	M6
SK40-SF10-80	10	24	32	80	60.9	42	10	M8x1
SK40-SF12-80	12	24	32	80	60.9	47	10	M10x1
SK40-SF14-80	14	27	34	80	60.9	47	10	M10x1
SK40-SF16-80	16	27	34	80	60.9	50	10	M12x1
SK40-SF18-80	18	33	42	80	60.9	50	10	M12x1
SK40-SF20-80	20	33	42	80	60.9	52	10	M16x1
SK40-SF25-100	25	44	50	100	80.9	58	10	M16x1
SK40-SF32-100	32	44	50	100	80.9	62	10	M16x1

## SK热缩刀柄标准型 SK Shrink fit chuck 4.5°

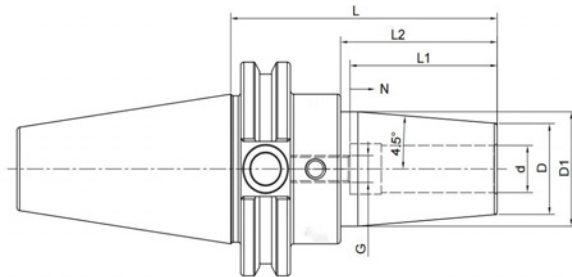


Cat No	d	D	D1	L	L2	L1	N	G
SK40-SF06-120	6	21	27	120	100.9	36	10	M5
SK40-SF08-120	8	21	27	120	100.9	36	10	M6
SK40-SF10-120	10	24	32	120	100.9	42	10	M8x1
SK40-SF12-120	12	24	32	120	100.9	47	10	M10x1
SK40-SF14-120	14	27	34	120	100.9	47	10	M10x1
SK40-SF16-120	16	27	34	120	100.9	50	10	M12x1
SK40-SF18-120	18	33	42	120	100.9	50	10	M12x1
SK40-SF20-120	20	33	42	120	100.9	52	10	M16x1
SK40-SF25-120	25	44	50	120	100.9	58	10	M16x1
SK40-SF06-160	6	21	32	160	140.9	36	10	M5
SK40-SF08-160	8	21	32	160	140.9	36	10	M6
SK40-SF10-160	10	24	34	160	140.9	42	10	M8x1
SK40-SF12-160	12	24	34	160	140.9	47	10	M10x1
SK40-SF14-160	14	27	42	160	140.9	47	10	M10x1
SK40-SF16-160	16	27	42	160	140.9	50	10	M12x1
SK40-SF18-160	18	33	50	160	140.9	50	10	M12x1
SK40-SF20-160	20	33	50	160	140.9	52	10	M16x1
SK40-SF25-160	25	44	50	160	140.9	58	10	M16x1
SK40-SF32-160	32	44	50	160	140.9	62	10	M16x1
SK40-SF06-200	6	21	32	200	180.9	36	10	M5
SK40-SF08-200	8	21	32	200	180.9	36	10	M6
SK40-SF10-200	10	24	34	200	180.9	42	10	M8x1
SK40-SF12-200	12	24	34	200	180.9	47	10	M10x1
SK40-SF14-200	14	27	42	200	180.9	47	10	M10x1
SK40-SF16-200	16	27	42	200	180.9	50	10	M12x1
SK40-SF18-200	18	33	50	200	180.9	50	10	M12x1
SK40-SF20-200	20	33	50	200	180.9	52	10	M16x1
SK40-SF25-200	25	44	50	200	180.9	58	10	M16x1
SK40-SF32-200	32	44	50	200	180.9	62	10	M16x1

Cat No	d	D	D1	L	L2	L1	N	G
SK50-SF06-80	6	21	27	80	60.9	36	10	M5
SK50-SF08-80	8	21	27	80	60.9	36	10	M6
SK50-SF10-80	10	24	32	80	60.9	42	10	M8x1
SK50-SF12-80	12	24	32	80	60.9	47	10	M10x1
SK50-SF14-80	14	27	34	80	60.9	47	10	M10x1
SK50-SF16-80	16	27	34	80	60.9	50	10	M12x1
SK50-SF18-80	18	33	42	80	60.9	50	10	M12x1
SK50-SF20-80	20	33	42	80	60.9	52	10	M16x1
SK50-SF25-100	25	44	53	100	80.9	58	10	M16x1
SK50-SF32-100	32	44	53	100	80.9	62	10	M16x1
SK50-SF06-120	6	21	27	120	100.9	36	10	M5
SK50-SF08-120	8	21	27	120	100.9	36	10	M6
SK50-SF10-120	10	24	32	120	100.9	42	10	M8x1
SK50-SF12-120	12	24	32	120	100.9	47	10	M10x1
SK50-SF14-120	14	27	34	120	100.9	47	10	M10x1
SK50-SF16-120	16	27	34	120	100.9	50	10	M12x1
SK50-SF18-120	18	33	42	120	100.9	50	10	M12x1
SK50-SF20-120	20	33	42	120	100.9	52	10	M16x1
SK50-SF25-120	25	44	53	120	100.9	58	10	M16x1
SK50-SF32-120	32	44	53	120	100.9	62	10	M16x1

Cat No	d	D	D1	L	L2	L1	N	G
SK50-SF06-160	6	21	32	160	140.9	36	10	M5
SK50-SF08-160	8	21	32	160	140.9	36	10	M6
SK50-SF10-160	10	24	34	160	140.9	42	10	M8x1
SK50-SF12-160	12	24	34	160	140.9	47	10	M10x1
SK50-SF14-160	14	27	42	160	140.9	47	10	M10x1
SK50-SF16-160	16	27	42	160	140.9	50	10	M12x1
SK50-SF18-160	18	33	50	160	140.9	50	10	M12x1
SK50-SF20-160	20	33	50	160	140.9	52	10	M16x1
SK50-SF25-160	25	44	60	160	140.9	58	10	M16x1
SK50-SF32-160	32	44	60	160	140.9	62	10	M16x1
SK50-SF06-200	6	21	32	200	180.9	36	10	M5
SK50-SF08-200	8	21	32	200	180.9	36	10	M6
SK50-SF10-200	10	24	34	200	180.9	42	10	M8x1
SK50-SF12-200	12	24	34	200	180.9	47	10	M10x1
SK50-SF14-200	14	27	42	200	180.9	47	10	M10x1
SK50-SF16-200	16	27	42	200	180.9	50	10	M12x1
SK50-SF18-200	18	33	50	200	180.9	50	10	M12x1
SK50-SF20-200	20	33	50	200	180.9	52	10	M16x1
SK50-SF25-200	25	44	60	200	180.9	58	10	M16x1
SK50-SF32-200	32	44	60	200	180.9	62	10	M16x1

## CAT热缩刀柄标准型 CAT Shrink fit chuck 4.5°

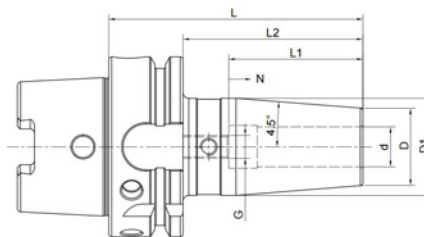


Cat No	d	D	D1	L	L2	L1	N	G
CAT40-SF04-80	4	15	20	80	60.9	-	-	-
CAT40-SF05-80	5	15	20	80	60.9	-	-	-
CAT40-SF06-80	6	21	27	80	60.9	36	10	M5
CAT40-SF08-80	8	21	27	80	60.9	36	10	M6
CAT40-SF10-80	10	24	32	80	60.9	42	10	M8x1
CAT40-SF12-80	12	24	32	80	60.9	47	10	M10x1
CAT40-SF14-80	14	27	34	80	60.9	47	10	M10x1
CAT40-SF16-80	16	27	34	80	60.9	50	10	M12x1
CAT40-SF18-80	18	33	42	80	60.9	50	10	M12x1
CAT40-SF20-80	20	33	42	80	60.9	52	10	M16x1
CAT40-SF25-100	25	44	50	100	80.9	58	10	M16x1
CAT40-SF32-100	32	44	50	100	80.9	62	10	M16x1
CAT40-SF06-120	6	21	27	120	100.9	36	10	M5
CAT40-SF08-120	8	21	27	120	100.9	36	10	M6
CAT40-SF10-120	10	24	32	120	100.9	42	10	M8x1
CAT40-SF12-120	12	24	32	120	100.9	47	10	M10x1
CAT40-SF14-120	14	27	34	120	100.9	47	10	M10x1
CAT40-SF16-120	16	27	34	120	100.9	50	10	M12x1
CAT40-SF18-120	18	33	42	120	100.9	50	10	M12x1
CAT40-SF20-120	20	33	42	120	100.9	52	10	M16x1
CAT40-SF25-120	25	44	50	120	100.9	58	10	M16x1
CAT40-SF06-160	6	21	32	160	140.9	36	10	M5
CAT40-SF08-160	8	21	32	160	140.9	36	10	M6
CAT40-SF10-160	10	24	34	160	140.9	42	10	M8x1
CAT40-SF12-160	12	24	34	160	140.9	47	10	M10x1
CAT40-SF14-160	14	27	42	160	140.9	47	10	M10x1
CAT40-SF16-160	16	27	42	160	140.9	50	10	M12x1
CAT40-SF18-160	18	33	50	160	140.9	50	10	M12x1
CAT40-SF20-160	20	33	50	160	140.9	52	10	M16x1
CAT40-SF25-160	25	44	50	160	140.9	58	10	M16x1
CAT40-SF32-160	32	44	50	160	140.9	62	10	M16x1

Cat No	d	D	D1	L	L2	L1	N	G
CAT40-SF06-200	6	21	32	200	180.9	36	10	M5
CAT40-SF08-200	8	21	32	200	180.9	36	10	M6
CAT40-SF10-200	10	24	34	200	180.9	42	10	M8x1
CAT40-SF12-200	12	24	34	200	180.9	47	10	M10x1
CAT40-SF14-200	14	27	42	200	180.9	47	10	M10x1
CAT40-SF16-200	16	27	42	200	180.9	50	10	M12x1
CAT40-SF18-200	18	33	50	200	180.9	50	10	M12x1
CAT40-SF20-200	20	33	50	200	180.9	52	10	M16x1
CAT40-SF25-200	25	44	50	200	180.9	58	10	M16x1
CAT40-SF32-200	32	44	50	200	180.9	62	10	M16x1
CAT50-SF06-80	6	21	27	80	60.9	36	10	M5
CAT50-SF08-80	8	21	27	80	60.9	36	10	M6
CAT50-SF10-80	10	24	32	80	60.9	42	10	M8x1
CAT50-SF12-80	12	24	32	80	60.9	47	10	M10x1
CAT50-SF14-80	14	27	34	80	60.9	47	10	M10x1
CAT50-SF16-80	16	27	34	80	60.9	50	10	M12x1
CAT50-SF18-80	18	33	42	80	60.9	50	10	M12x1
CAT50-SF20-80	20	33	42	80	60.9	52	10	M16x1
CAT50-SF25-100	25	44	53	100	80.9	58	10	M16x1
CAT50-SF32-100	32	44	53	100	80.9	62	10	M16x1
CAT50-SF06-120	6	21	27	120	100.9	36	10	M5
CAT50-SF08-120	8	21	27	120	100.9	36	10	M6
CAT50-SF10-120	10	24	32	120	100.9	42	10	M8x1
CAT50-SF12-120	12	24	32	120	100.9	47	10	M10x1
CAT50-SF14-120	14	27	34	120	100.9	47	10	M10x1
CAT50-SF16-120	16	27	34	120	100.9	50	10	M12x1
CAT50-SF18-120	18	33	42	120	100.9	50	10	M12x1
CAT50-SF20-120	20	33	42	120	100.9	52	10	M16x1
CAT50-SF25-120	25	44	53	120	100.9	58	10	M16x1
CAT50-SF32-120	32	44	53	120	100.9	62	10	M16x1

Cat No	d	D	D1	L	L2	L1	N	G
CAT50-SF06-160	6	21	32	160	140.9	36	10	M5
CAT50-SF08-160	8	21	32	160	140.9	36	10	M6
CAT50-SF10-160	10	24	34	160	140.9	42	10	M8x1
CAT50-SF12-160	12	24	34	160	140.9	47	10	M10x1
CAT50-SF14-160	14	27	42	160	140.9	47	10	M10x1
CAT50-SF16-160	16	27	42	160	140.9	50	10	M12x1
CAT50-SF18-160	18	33	50	160	140.9	50	10	M12x1
CAT50-SF20-160	20	33	50	160	140.9	52	10	M16x1
CAT50-SF25-160	25	44	60	160	140.9	58	10	M16x1
CAT50-SF32-160	32	44	60	160	140.9	62	10	M16x1
CAT50-SF06-200	6	21	32	200	180.9	36	10	M5
CAT50-SF08-200	8	21	32	200	180.9	36	10	M6
CAT50-SF10-200	10	24	34	200	180.9	42	10	M8x1
CAT50-SF12-200	12	24	34	200	180.9	47	10	M10x1
CAT50-SF14-200	14	27	42	200	180.9	47	10	M10x1
CAT50-SF16-200	16	27	42	200	180.9	50	10	M12x1
CAT50-SF18-200	18	33	50	200	180.9	50	10	M12x1
CAT50-SF20-200	20	33	50	200	180.9	52	10	M16x1
CAT50-SF25-200	25	44	60	200	180.9	58	10	M16x1
CAT50-SF32-200	32	44	60	200	180.9	62	10	M16x1

## HSK-A热缩刀柄标准型 HSK-A Shrink fit chuck 4.5°



Cat No	d	D	D1	L	L2	L1	N	G
HSK32A-SF03-65	3	15	20	65	45	-	-	-
HSK32A-SF04-65	4	15	20	65	45	-	-	-
HSK32A-SF05-65	5	15	20	65	45	-	-	-
HSK32A-SF06-75	6	21	26	75	55	36	10	M5
HSK32A-SF08-75	8	21	26	75	55	36	10	M6
HSK32A-SF10-75	10	24	29	75	55	42	10	M8x1
HSK32A-SF12-80	12	24	29	80	60	47	5	M10x1
HSK40A-SF03-60	3	15	20	60	40	-	-	-
HSK40A-SF04-60	4	15	20	60	40	-	-	-
HSK40A-SF05-60	5	15	20	60	40	-	-	-
HSK40A-SF06-80	6	21	27	80	60	36	10	M5
HSK40A-SF08-80	8	21	27	80	60	36	10	M6
HSK40A-SF10-80	10	24	32	80	60	42	10	M8x1
HSK40A-SF12-90	12	24	32	90	70	47	10	M10x1
HSK40A-SF14-90	14	27	34	90	70	47	10	M10x1
HSK40A-SF16-90	16	27	34	90	70	50	10	M12x1
HSK50A-SF03-80	3	15	20	80	54	-	-	-
HSK50A-SF04-80	4	15	20	80	54	-	-	-
HSK50A-SF05-80	5	15	20	80	54	-	-	-
HSK50A-SF06-80	6	21	27	80	54	36	10	M5
HSK50A-SF08-80	8	21	27	80	54	36	10	M6
HSK50A-SF10-85	10	24	32	85	59	42	10	M8x1
HSK50A-SF12-90	12	24	32	90	64	47	10	M10x1
HSK50A-SF14-90	14	27	34	90	64	47	10	M10x1
HSK50A-SF16-95	16	27	34	95	69	50	10	M12x1
HSK50A-SF18-95	18	33	42	95	69	50	10	M12x1
HSK50A-SF20-100	20	33	42	100	74	52	10	M16x1

Cat No	d	D	D1	L	L2	L1	N	G
HSK63A-SF03-80	3	15	20	80	54	-	-	-
HSK63A-SF04-80	4	15	20	80	54	-	-	-
HSK63A-SF05-80	5	15	20	80	54	-	-	-
HSK63A-SF06-80	6	21	27	80	54	36	10	M5
HSK63A-SF08-80	8	21	27	80	54	36	10	M6
HSK63A-SF10-85	10	24	32	85	59	42	10	M8x1
HSK63A-SF12-90	12	24	32	90	64	47	10	M10x1
HSK63A-SF14-90	14	27	34	90	64	47	10	M10x1
HSK63A-SF16-95	16	27	34	95	69	50	10	M12x1
HSK63A-SF18-95	18	33	42	95	69	50	10	M12x1
HSK63A-SF20-100	20	33	42	100	74	52	10	M16x1
HSK63A-SF25-115	25	44	52.5	115	89	58	10	M16x1
HSK63A-SF32-120	32	44	52.5	120	94	62	10	M16x1
HSK63A-SF04-120	4	15	20	120	94	-	-	-
HSK63A-SF06-120	6	21	27	120	94	36	10	M5
HSK63A-SF08-120	8	21	27	120	94	36	10	M6
HSK63A-SF10-120	10	24	32	120	94	42	10	M8x1
HSK63A-SF12-120	12	24	32	120	94	47	10	M10x1
HSK63A-SF14-120	14	27	34	120	94	47	10	M10x1
HSK63A-SF16-120	16	27	34	120	94	50	10	M12x1
HSK63A-SF18-120	18	33	42	120	94	50	10	M12x1
HSK63A-SF20-120	20	33	42	120	94	52	10	M16x1
HSK63A-SF25-120	25	44	52.5	120	94	58	10	M16x1
HSK63A-SF32-120	32	44	52.5	120	94	62	10	M16x1

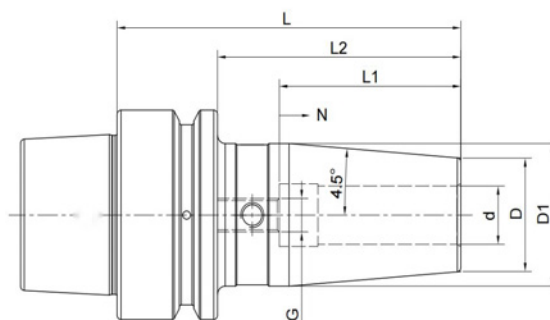


Cat No	d	D	D1	L	L2	L1	N	G
HSK63A-SF04-160	4	15	25	160	134	-	-	-
HSK63A-SF06-160	6	21	32	160	134	36	10	M5
HSK63A-SF08-160	8	21	32	160	134	36	10	M6
HSK63A-SF10-160	10	24	34	160	134	42	10	M8x1
HSK63A-SF12-160	12	24	34	160	134	47	10	M10x1
HSK63A-SF14-160	14	27	42	160	134	47	10	M10x1
HSK63A-SF16-160	16	27	42	160	134	50	10	M12x1
HSK63A-SF18-160	18	33	50	160	134	50	10	M12x1
HSK63A-SF20-160	20	33	50	160	134	52	10	M16x1
HSK63A-SF25-160	25	44	52.5	160	134	58	10	M16x1
HSK63A-SF32-160	32	44	52.5	160	134	62	10	M16x1
HSK63A-SF06-200	6	21	32	200	174	36	10	M5
HSK63A-SF08-200	8	21	32	200	174	36	10	M6
HSK63A-SF10-200	10	24	34	200	174	42	10	M8x1
HSK63A-SF12-200	12	24	34	200	174	47	10	M10x1
HSK63A-SF14-200	14	27	42	200	174	47	10	M10x1
HSK63A-SF16-200	16	27	42	200	174	50	10	M12x1
HSK63A-SF18-200	18	33	50	200	174	50	10	M12x1
HSK63A-SF20-200	20	33	50	200	174	52	10	M16x1
HSK63A-SF25-200	25	44	52.5	200	174	58	10	M16x1
HSK63A-SF32-200	32	44	52.5	200	174	62	10	M16x1

Cat No	d	D	D1	L	L2	L1	N	G
HSK100A-SF06-85	6	21	27	85	56	36	10	M5
HSK100A-SF08-85	8	21	27	85	56	36	10	M6
HSK100A-SF10-90	10	24	32	90	61	42	10	M8x1
HSK100A-SF12-95	12	24	32	95	66	47	10	M10x1
HSK100A-SF14-95	14	27	34	95	66	47	10	M10x1
HSK100A-SF16-100	16	27	34	100	71	50	10	M12x1
HSK100A-SF18-100	18	33	42	100	71	50	10	M12x1
HSK100A-SF20-105	20	33	42	105	76	52	10	M16x1
HSK100A-SF25-115	25	44	53	115	86	58	10	M16x1
HSK100A-SF32-120	32	44	53	120	91	62	10	M16x1
HSK100A-SF06-120	6	21	27	120	91	36	10	M5
HSK100A-SF08-120	8	21	27	120	91	36	10	M6
HSK100A-SF10-120	10	24	32	120	91	42	10	M8x1
HSK100A-SF12-120	12	24	32	120	91	47	10	M10x1
HSK100A-SF14-120	14	27	34	120	91	47	10	M10x1
HSK100A-SF16-120	16	27	34	120	91	50	10	M12x1
HSK100A-SF18-120	18	33	42	120	91	50	10	M12x1
HSK100A-SF20-120	20	33	42	120	91	52	10	M16x1
HSK100A-SF25-120	25	44	53	120	91	58	10	M16x1
HSK100A-SF32-120	32	44	53	120	91	62	10	M16x1

Cat No	d	D	D1	L	L2	L1	N	G
HSK100A-SF06-160	6	21	32	160	131	36	10	M5
HSK100A-SF08-160	8	21	32	160	131	36	10	M6
HSK100A-SF10-160	10	24	34	160	131	42	10	M8x1
HSK100A-SF12-160	12	24	34	160	131	47	10	M10x1
HSK100A-SF14-160	14	27	42	160	131	47	10	M10x1
HSK100A-SF16-160	16	27	42	160	131	50	10	M12x1
HSK100A-SF18-160	18	33	50	160	131	50	10	M12x1
HSK100A-SF20-160	20	33	50	160	131	52	10	M16x1
HSK100A-SF25-160	25	44	60	160	131	58	10	M16x1
HSK100A-SF32-160	32	44	60	160	131	62	10	M16x1
HSK100A-SF06-200	6	21	32	200	171	36	10	M5
HSK100A-SF08-200	8	21	32	200	171	36	10	M6
HSK100A-SF10-200	10	24	34	200	171	42	10	M8x1
HSK100A-SF12-200	12	24	34	200	171	47	10	M10x1
HSK100A-SF14-200	14	27	42	200	171	47	10	M10x1
HSK100A-SF16-200	16	27	42	200	171	50	10	M12x1
HSK100A-SF18-200	18	33	50	200	171	50	10	M12x1
HSK100A-SF20-200	20	33	50	200	171	52	10	M16x1
HSK100A-SF25-200	25	44	60	200	171	58	10	M16x1
HSK100A-SF32-200	32	44	60	200	171	62	10	M16x1

## HSK-E热缩刀柄标准型 HSK-E Shrink fit chuck 4.5°

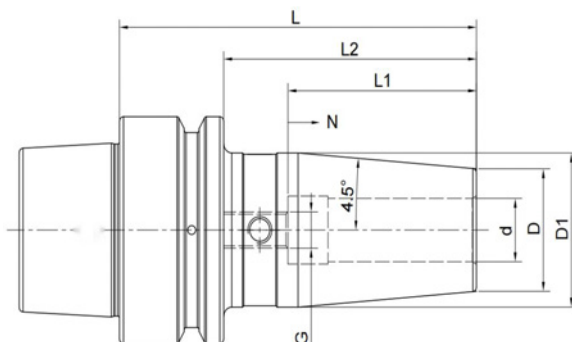


Cat No	d	D	D1	L	L2	L1	N	G
HSK32E-SF03-60	3	15	20	60	40	.	.	.
HSK32E-SF04-60	4	15	20	60	40	.	.	.
HSK32E-SF05-60	5	15	20	60	40	.	.	.
HSK32E-SF06-70	6	20	26	70	50	36	10	M5
HSK32E-SF08-70	8	20	26	70	50	36	10	M6
HSK32E-SF10-70	10	24	29	70	50	42	10	M8x1
HSK32E-SF12-70	12	24	29	70	50	47	10	M10x1
HSK40E-SF03-60	3	15	20	60	40	.	.	.
HSK40E-SF04-60	4	15	20	60	40	.	.	.
HSK40E-SF05-60	5	15	20	60	40	.	.	.
HSK40E-SF06-65	6	21	27	65	45	36	.	.
HSK40E-SF08-65	8	21	27	65	45	36	.	.
HSK40E-SF10-65	10	24	30	65	45	42	.	.
HSK40E-SF12-65	12	24	30	65	45	47	.	.
HSK40E-SF03-80	3	15	20	80	60	.	.	.
HSK40E-SF04-80	4	15	20	80	60	.	.	.
HSK40E-SF05-80	5	15	20	80	60	.	.	.
HSK40E-SF06-80	6	21	27	80	60	36	10	M5
HSK40E-SF08-80	8	21	27	80	60	36	10	M6
HSK40E-SF10-80	10	24	32	80	60	42	10	M8x1
HSK40E-SF12-90	12	24	32	90	70	47	10	M10x1
HSK40E-SF16-90	16	27	34	90	70	50	10	M12x1
HSK40E-SF03-120	3	15	20	120	100	.	.	.
HSK40E-SF04-120	4	15	20	120	100	.	.	.
HSK40E-SF05-120	5	15	20	120	100	.	.	.
HSK40E-SF06-120	6	21	27	120	100	36	10	M5
HSK40E-SF08-120	8	21	27	120	100	36	10	M6
HSK40E-SF10-120	10	24	32	120	100	42	10	M8x1
HSK40E-SF12-120	12	24	32	120	100	47	10	M10x1

Cat No	d	D	D1	L	L2	L1	N	G
HSK50E-SF03-80	3	15	20	80	54	.	.	.
HSK50E-SF04-80	4	15	20	80	54	.	.	.
HSK50E-SF05-80	5	15	20	80	54	.	.	.
HSK50E-SF06-80	6	21	27	80	54	36	10	M5
HSK50E-SF08-80	8	21	27	80	54	36	10	M6
HSK50E-SF10-85	10	24	32	85	59	42	10	M8x1
HSK50E-SF12-90	12	24	32	90	64	47	10	M10x1
HSK50E-SF14-90	14	27	34	90	64	47	10	M10x1
HSK50E-SF16-95	16	27	34	95	69	50	10	M12x1
HSK50E-SF18-95	18	33	42	95	69	50	10	M12x1
HSK50E-SF20-100	20	33	42	100	74	52	10	M16x1
HSK63E-SF06-90	6	21	27	90	64	36	10	M5
HSK63E-SF08-90	8	21	27	90	64	36	10	M6
HSK63E-SF10-90	10	24	32	90	64	42	10	M8x1
HSK63E-SF12-90	12	24	32	90	64	47	10	M10x1
HSK63E-SF14-90	14	27	34	90	64	47	10	M10x1
HSK63E-SF16-95	16	27	34	95	69	50	10	M12x1
HSK63E-SF18-95	18	33	42	95	69	50	10	M12x1
HSK63E-SF20-100	20	33	42	100	74	52	10	M16x1
HSK63E-SF25-120	25	44	53	120	89	58	10	M16x1



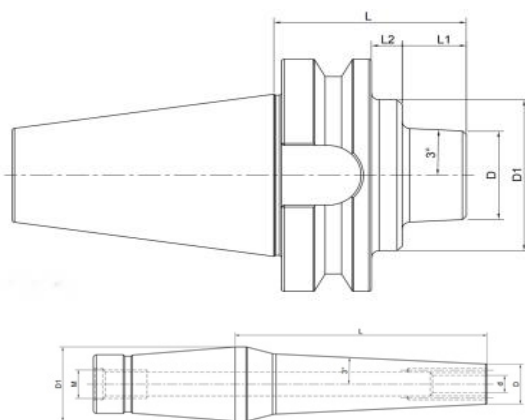
## HSK-F热缩刀柄标准型 HSK-F Shrink fit chuck 4.5°



Cat No	d	D	D1	L	L2	L1	N	G
HSK40F-SF03-60	3	15	20	60	40	-	-	-
HSK40F-SF04-60	4	15	20	60	40	-	-	-
HSK40F-SF05-60	5	15	20	60	40	-	-	-
HSK40F-SF06-65	6	21	27	65	45	36	5	M5
HSK40F-SF08-65	8	21	27	65	45	36	5	M6
HSK40F-SF10-65	10	24	31	65	45	42	5	M8x1
HSK40F-SF12-65	12	24	31	65	45	42	5	M10x1
HSK40F-SF06-80	6	21	27	80	60	36	10	M5
HSK40F-SF08-80	8	21	27	80	60	36	10	M6
HSK40F-SF10-80	10	24	32	80	60	42	10	M8x1
HSK40F-SF12-90	12	24	32	90	70	47	10	M10x1
HSK40F-SF16-90	16	27	34	90	70	50	10	M12x1
HSK63F-SF03-90	3	15	20	90	64	-	-	-
HSK63F-SF04-90	4	15	20	90	64	-	-	-
HSK63F-SF05-90	5	15	20	90	64	-	-	-
HSK63F-SF06-90	6	21	27	90	64	36	10	M5
HSK63F-SF08-90	8	21	27	90	64	36	10	M6
HSK63F-SF10-90	10	24	32	90	64	42	10	M8x1
HSK63F-SF12-90	12	24	32	90	64	47	10	M10x1
HSK63F-SF14-95	14	27	34	95	69	47	10	M10x1
HSK63F-SF16-95	16	27	34	95	69	50	10	M12x1
HSK63F-SF18-95	18	33	42	95	69	50	10	M12x1
HSK63F-SF20-100	20	33	42	100	74	52	10	M16x1
HSK63F-SF25-115	25	36	42	115	89	58	10	M16x1

Cat No	d	D	D1	L	L2	L1	N	G
HSK63F-SF03-120	3	15	20	120	94	-	-	-
HSK63F-SF04-120	4	15	20	120	94	-	-	-
HSK63F-SF05-120	5	15	20	120	94	-	-	-
HSK63F-SF06-120	6	21	27	120	94	36	10	M5
HSK63F-SF08-120	8	21	27	120	94	36	10	M6
HSK63F-SF10-120	10	24	32	120	94	42	10	M8x1
HSK63F-SF12-120	12	24	32	120	94	47	10	M10x1
HSK63F-SF14-120	14	27	34	120	94	47	10	M10x1
HSK63F-SF16-120	16	27	34	120	94	50	10	M12x1
HSK63F-SF18-120	18	33	42	120	94	50	10	M12x1
HSK63F-SF20-120	20	33	42	120	94	52	10	M16x1
HSK63F-SF03-160	3	15	27	160	134	-	-	-
HSK63F-SF04-160	4	15	27	160	134	-	-	-
HSK63F-SF05-160	5	15	27	160	134	-	-	-
HSK63F-SF06-160	6	21	32	160	134	36	10	M5
HSK63F-SF08-160	8	21	32	160	134	36	10	M6
HSK63F-SF10-160	10	24	34	160	134	42	10	M8x1
HSK63F-SF12-160	12	24	34	160	134	47	10	M10x1
HSK63F-SF14-160	14	27	42	160	134	47	10	M10x1
HSK63F-SF16-160	16	27	42	160	134	50	10	M12x1
HSK63F-SF18-160	18	33	51	160	134	50	10	M12x1
HSK63F-SF20-160	20	33	51	160	134	52	10	M16x1

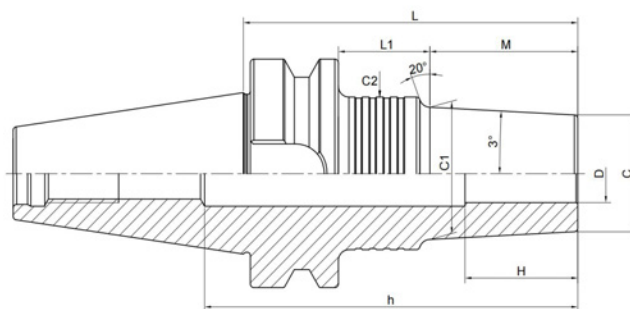
## 热缩刀柄套装 Shrink fit chuck SET



Cat No	ToolHolder Model	Extension Model	Extension Quantity
BT40-TSF12-45-6 pcs	BT40-TSF12-45	12-SF3/4/6/8/10/12-80	6
BT40-TSF12-75-6 pcs	BT40-TSF12-75	12-SF3/4/6/8/10/12-80	6
SK40-TSF12-45-6 pcs	SK40-TSF12-45	12-SF3/4/6/8/10/12-80	6
SK40-TSF12-75-6 pcs	SK40-TSF12-75	12-SF3/4/6/8/10/12-80	6
HSK63A-TSF12-75-6 pcs	HSK63A-TSF12-75	12-SF3/4/6/8/10/12-80	6
HSK63F-TSF12-75-6 pcs	HSK63F-TSF12-75	12-SF3/4/6/8/10/12-80	6

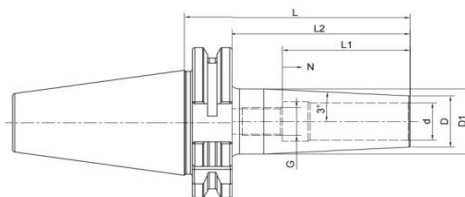
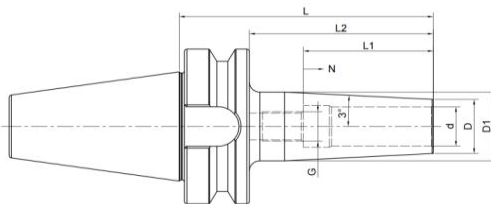
Cat No	ToolHolder Model	Extension Model	Extension Quantity
BT40-TSF12-45-6 pcs	BT40-TSF12-45	12-SF3/4/6/8/10/12-80S	6
BT40-TSF12-75-6 pcs	BT40-TSF12-75	12-SF3/4/6/8/10/12-80S	6
SK40-TSF12-45-6 pcs	SK40-TSF12-45	12-SF3/4/6/8/10/12-80S	6
SK40-TSF12-75-6 pcs	SK40-TSF12-75	12-SF3/4/6/8/10/12-80S	6
HSK63A-TSF12-75-6 pcs	HSK63A-TSF12-75	12-SF3/4/6/8/10/12-80S	6
HSK63F-TSF12-75-6 pcs	HSK63F-TSF12-75	12-SF3/4/6/8/10/12-80S	6

## BT30 热缩刀柄3度, 薄壁C型 BT30 Shrink chuck 3° slim form C



Cat No	D	C	L	M	L1	C1	C2	H	h
BT30-SFA3-60-M22	3	6	60	22	16	8.3	20	9	80
BT30-SFA3-75-M22	3	6	75	22	31	8.3	25	9	88
BT30-SFA3-80-M42	3	6	80	42	16	10.4	20	9	100
BT30-SFA3-95-M42	3	6	95	42	31	10.4	25	9	119
BT30-SFA3-120-M67	3	6	120	67	31	13	25	9	144
BT30-SFA4-60-M22	4	7	60	22	16	9.3	20	12	80
BT30-SFA4-75-M22	4	7	75	22	31	9.3	25	12	88
BT30-SFA4-95-M42	4	7	95	42	31	11.4	25	12	119
BT30-SFA4-120-M67	4	7	120	67	31	14	25	12	144
BT30-SFA6-60-M22	6	9	60	22	16	11.3	20	18	80
BT30-SFA6-75-M22	6	9	75	22	31	11.3	25	18	88
BT30-SFA6-95-M42	6	9	95	42	31	13.4	25	18	119
BT30-SFA6-120-M67	6	9	120	67	31	16	25	18	144

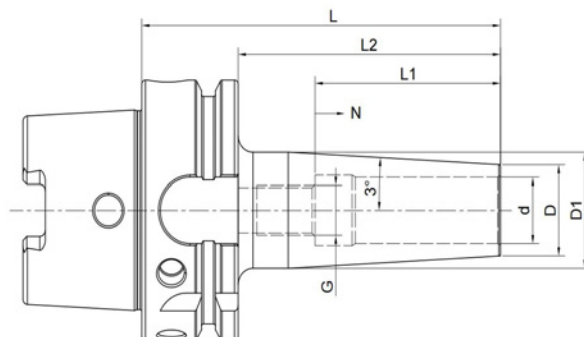
## BT/SK热缩刀柄 BT/SK Shrink fit chuck 3°



Cat No	d	D	D1	L	L2	L1	N	G
BT30-SFS03-80	3	9	13	80	58	-	-	-
BT30-SFS04-80	4	10	14	80	58	-	-	-
BT30-SFS06-80	6	12	-	80	58	36	5	M5
BT30-SFS08-80	8	14	-	80	58	36	5	M6
BT30-SFS10-80	10	16	-	80	58	42	5	M8x1
BT30-SFS12-80	12	18	-	80	58	47	5	M10x1
BT30-SFS16-80	16	22	-	80	58	50	5	M12x1
BT40-SFS03-90	3	9	13	90	63	-	-	-
BT40-SFS04-90	4	10	14	90	63	-	-	-
BT40-SFS06-90	6	12	18	90	63	36	5	M5
BT40-SFS08-90	8	14	20	90	63	36	5	M6
BT40-SFS10-90	10	16	22	90	63	42	5	M8x1
BT40-SFS12-90	12	18	24	90	63	47	5	M10x1
BT40-SFS16-90	16	22	28	90	63	50	5	M12x1
BT40-SFS03-120	3	9	16	120	93	-	-	-
BT40-SFS04-120	4	10	17	120	93	-	-	-
BT40-SFS06-120	6	12	21	120	93	36	5	M5
BT40-SFS08-120	8	14	23	120	93	36	5	M6
BT40-SFS10-120	10	16	25	120	93	42	5	M8x1
BT40-SFS12-120	12	18	27	120	93	47	5	M10x1
BT40-SFS16-120	16	22	31	120	93	50	5	M12x1
BT40-SFS03-160	3	9	19	160	133	-	-	-
BT40-SFS04-160	4	10	20	160	133	-	-	-
BT40-SFS06-160	6	12	24	160	133	36	5	M5
BT40-SFS08-160	8	14	26	160	133	36	5	M6
BT40-SFS10-160	10	16	28	160	133	42	5	M8x1
BT40-SFS12-160	12	18	30	160	133	47	5	M10x1
BT40-SFS16-160	16	22	34	160	133	50	5	M12x1

SK30-SFS03-80	3	9	13	80	60.9	-	-	-
SK30-SFS04-80	4	10	14	80	60.9	-	-	-
SK30-SFS06-80	6	12	18	80	60.9	36	5	M5
SK30-SFS08-80	8	14	20	80	60.9	36	5	M6
SK30-SFS10-80	10	16	22	80	60.9	42	5	M8x1
SK30-SFS12-80	12	18	24	80	60.9	47	5	M10x1
SK30-SFS16-80	16	22	28	80	60.9	50	5	M12x1
SK40-SFS03-90	3	9	13	90	70.9	-	-	-
SK40-SFS04-90	4	10	14	90	70.9	-	-	-
SK40-SFS06-90	6	12	18	90	70.9	36	5	M5
SK40-SFS08-90	8	14	20	90	70.9	36	5	M6
SK40-SFS10-90	10	16	22	90	70.9	42	5	M8x1
SK40-SFS12-90	12	18	24	90	70.9	47	5	M10x1
SK40-SFS16-90	16	22	28	90	70.9	50	5	M12x1
SK40-SFS03-120	3	9	16	120	100.9	-	-	-
SK40-SFS04-120	4	10	17	120	100.9	-	-	-
SK40-SFS06-120	6	12	21	120	100.9	36	5	M5
SK40-SFS08-120	8	14	23	120	100.9	36	5	M6
SK40-SFS10-120	10	16	25	120	100.9	42	5	M8x1
SK40-SFS12-120	12	18	27	120	100.9	47	5	M10x1
SK40-SFS16-120	16	22	31	120	100.9	50	5	M12x1
SK40-SFS03-160	3	9	19	160	140.9	-	-	-
SK40-SFS04-160	4	10	20	160	140.9	-	-	-
SK40-SFS06-160	6	12	24	160	140.9	36	5	M5
SK40-SFS08-160	8	14	26	160	140.9	36	5	M6
SK40-SFS10-160	10	16	28	160	140.9	42	5	M8x1
SK40-SFS12-160	12	18	30	160	140.9	47	5	M10x1
SK40-SFS16-160	16	22	34	160	140.9	50	5	M12x1

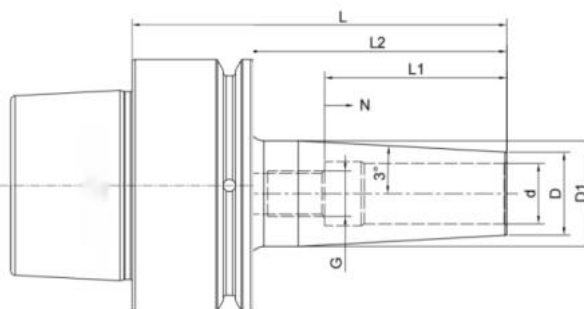
## HSK-A热缩刀柄 HSK-A Shrink fit chuck 3°



Cat No	d	D	D1	L	L2	L1	N	G
HSK50A-SFS03-90	3	9	13	90	64	-	-	-
HSK50A-SFS04-90	4	10	14	90	64	-	-	-
HSK50A-SFS06-90	6	12	18	90	64	36	5	M5
HSK50A-SFS08-90	8	14	20	90	64	36	5	M6
HSK50A-SFS10-90	10	16	22	90	64	42	5	M8x1
HSK50A-SFS12-90	12	18	24	90	64	47	5	M10x1
HSK50A-SFS16-90	16	22	28	90	64	50	5	M12x1
HSK50A-SFS03-120	3	9	16	120	94	-	-	-
HSK50A-SFS04-120	4	10	17	120	94	-	-	-
HSK50A-SFS06-120	6	12	21	120	94	36	5	M5
HSK50A-SFS08-120	8	14	23	120	94	36	5	M6
HSK50A-SFS10-120	10	16	25	120	94	42	5	M8x1
HSK50A-SFS12-120	12	18	27	120	94	47	5	M10x1
HSK50A-SFS16-120	16	22	31	120	94	50	5	M12x1
HSK50A-SFS04-160	4	10	20	160	134	-	-	-
HSK50A-SFS06-160	6	12	24	160	134	36	5	M5
HSK50A-SFS08-160	8	14	26	160	134	36	5	M6
HSK50A-SFS10-160	10	16	28	160	134	42	5	M8x1
HSK50A-SFS12-160	12	18	30	160	134	47	5	M10x1
HSK50A-SFS16-160	16	22	34	160	134	50	5	M12x1

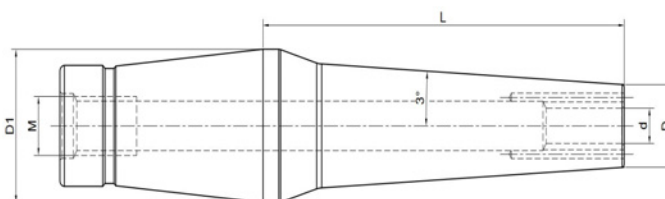
Cat No	d	D	D1	L	L2	L1	N	G
HSK63A-SFS04-90	4	10	14	90	64	-	-	-
HSK63A-SFS06-90	6	12	18	90	64	36	5	M5
HSK63A-SFS08-90	8	14	20	90	64	36	5	M6
HSK63A-SFS10-90	10	16	22	90	64	42	5	M8x1
HSK63A-SFS12-90	12	18	24	90	64	47	5	M10x1
HSK63A-SFS16-90	16	22	28	90	64	50	5	M12x1
HSK63A-SFS04-120	4	10	17	120	94	-	-	-
HSK63A-SFS06-120	6	12	21	120	94	36	5	M5
HSK63A-SFS08-120	8	14	23	120	94	36	5	M6
HSK63A-SFS10-120	10	16	25	120	94	42	5	M8x1
HSK63A-SFS12-120	12	18	27	120	94	47	5	M10x1
HSK63A-SFS16-120	16	22	31	120	94	50	5	M12x1
HSK63A-SFS03-160	3	9	19	160	134	-	-	-
HSK63A-SFS04-160	4	10	20	160	134	-	-	-
HSK63A-SFS06-160	6	12	24	160	134	36	5	M5
HSK63A-SFS08-160	8	14	26	160	134	36	5	M6
HSK63A-SFS10-160	10	16	28	160	134	42	5	M8x1
HSK63A-SFS12-160	12	18	30	160	134	47	5	M10x1
HSK63A-SFS16-160	16	22	34	160	134	50	5	M12x1

## HSK-E热缩刀柄 HSK-E Shrink fit chuck 3°



Cat No	d	D	D1	L	L2	L1	N	G
HSK32E-SFS3-64	3	9	13	64	40	20	5	M6
HSK32E-SFS4-64	4	10	14	64	40	20	5	M6
HSK32E-SFS6-74	6	12	17	74	50	36	5	M5
HSK32E-SFS8-74	8	14	19	74	50	36	5	M6
HSK32E-SFS10-78	10	16	21	78	55	42	5	M8x1
HSK40E-SFS3-50	3	9	12	50	24	20	5	M6
HSK40E-SFS4-50	4	10	12,5	50	24	20	5	M6
HSK40E-SFS6-50	6	12	15	50	24	34	-	-
HSK40E-SFS6-60	6	12	16	60	38	36	-	-
HSK40E-SFS8-60	8	14	18	60	38	36	-	-
HSK40E-SFS10-60	10	16	20	60	38	42	-	-
HSK40E-SFS12-60	12	18	22	60	38	42	-	-
HSK50E-SFS3-70	3	9	13	70	42	20	5	M6
HSK50E-SFS4-70	4	10	14	70	42	20	5	M6
HSK50E-SFS6-70	6	12	16	70	42	36	5	M5
HSK50E-SFS8-70	8	14	18	70	42	36	5	M6
HSK50E-SFS10-70	10	16	20	70	42	42	-	-
HSK50E-SFS12-70	12	18	22	70	42	47	-	-
HSK50E-SFS16-70	16	22	26	70	41	47	-	-
HSK50E-SFS6-90	6	12	18	90	60	36	5	M5
HSK50E-SFS8-90	8	14	20	90	60	36	5	M6
HSK50E-SFS10-90	10	16	22	90	60	42	5	M8x1
HSK50E-SFS12-90	12	18	24	90	60	47	5	M10x1
HSK50E-SFS16-90	16	22	28	90	60	50	5	M16x1

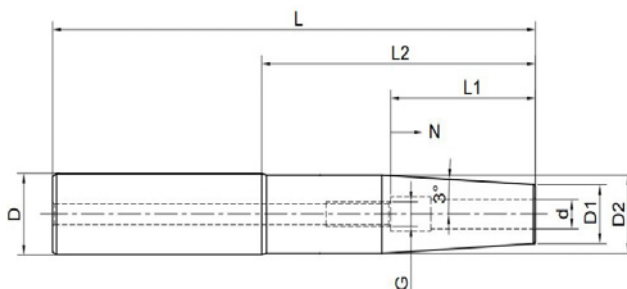
## 分体热缩延长杆 Shrink chuck extension slim



Cat No	d	D	D1	L	M	a
12-SF3-35	3	7.5	26	35	M10	3
12-SF3-55	3	7.5	26	55	M10	3
12-SF3-80	3	7.5	26	80	M10	3
12-SF4-35	4	10	26	35	M10	3
12-SF4-55	4	10	26	55	M10	3
12-SF4-80	4	10	26	80	M10	3
12-SF6-35	6	12	26	35	M10	3
12-SF6-55	6	12	26	55	M10	3
12-SF6-80	6	12	26	80	M10	3
12-SF8-35	8	14	26	35	M10	3
12-SF8-55	8	14	26	55	M10	3
12-SF8-80	8	14	26	80	M10	3
12-SF10-35	10	16	26	35	M10	3
12-SF10-55	10	16	26	55	M10	3
12-SF10-80	10	16	26	80	M10	3
12-SF12-35	12	20	26	35	M10	3
12-SF12-55	12	20	26	55	M10	3
12-SF12-80	12	20	26	80	M10	3

# 直柄热缩延长杆

## Shrink fit extension

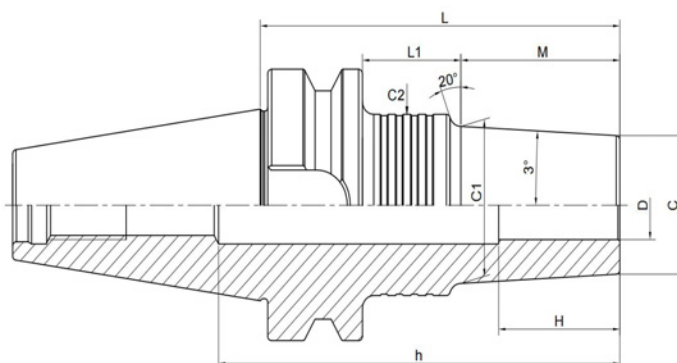


Cat No	d	D1	D2	D	L	L2	L1	N	G
C12-SFS03-120	3	9	11.8	12	120	.	73	.	.
C12-SFS04-120	4	10	11.8	12	120	.	73	.	.
C12-SFS05-120	5	11	11.8	12	120	.	73	.	.
C12-SFS06-120	6	12	17	12	120	36	73	10	M5
C12-SFS08-120	8	14	19	12	120	36	73	10	M6
C16-SFS03-120	3	9	13	16	120	.	70	.	.
C16-SFS04-120	4	10	14	16	120	.	70	.	.
C16-SFS05-120	5	11	15	16	120	.	70	.	.
C16-SFS06-120	6	12	15.8	16	120	36	70	10	M5
C16-SFS08-120	8	14	19	16	120	36	70	10	M6
C20-SFS03-120	3	9	13	20	120	.	68	.	.
C20-SFS04-120	4	10	14	20	120	.	68	.	.
C20-SFS05-120	5	11	15	20	120	.	68	.	.
C20-SFS06-120	6	12	16	20	120	36	68	10	M5
C20-SFS08-120	8	14	19	20	120	36	68	10	M6
C20-SFS10-120	10	16	19.8	20	120	42	68	10	M8x1
C20-SFS12-120	12	18	19.8	20	120	47	68	10	M10x1
C12-SFS03-160	3	9	11.8	12	160	.	113	.	.
C12-SFS04-160	4	10	11.8	12	160	.	113	.	.
C16-SFS03-160	3	9	13	16	160	.	110	.	.
C16-SFS04-160	4	10	14	16	160	.	110	.	.
C16-SFS05-160	5	11	15	16	160	.	110	.	.

C20-SFS05-160	5	11	15	20	160	.	110	.	.
C20-SFS06-160	6	12	16	20	160	36	108	10	M5
C20-SFS08-160	8	14	19	20	160	36	108	10	M6
C25-SFS08-160	8	14	19	25	160	36	108	10	M6
C25-SFS10-160	10	16	21	25	160	42	108	10	M8x1
C25-SFS12-160	12	18	23	25	160	47	108	10	M10x1
C25-SFS14-160	14	20	24.8	25	160	47	108	10	M10x1
C25-SFS16-160	16	22	24.8	25	160	50	108	10	M12x1
C32-SFS10-160	10	16	21	32	160	42	98	10	M8x1
C32-SFS12-160	12	18	23	32	160	47	98	10	M10x1
C32-SFS14-160	14	20	25	32	160	47	98	10	M10x1
C32-SFS16-160	16	22	28	32	160	50	98	10	M12x1
C32-SFS18-160	18	25	30	32	160	50	98	10	M12x1
C32-SFS20-160	20	26	31.8	32	160	52	98	10	M16x1
C16-SFS03-200	3	9	13	16	200	.	150	.	.
C16-SFS04-200	4	10	14	16	200	.	150	.	.
C16-SFS05-200	5	11	15	16	200	.	150	.	.
C16-SFS06-200	6	12	15.8	16	200	36	150	10	M5
C16-SFS08-200	8	14	19	16	200	36	150	10	M6
C20-SFS06-250	6	12	16	20	250	36	198	10	M5
C20-SFS08-250	8	14	19	20	250	36	198	10	M6
C20-SFS10-250	10	16	19.8	20	250	42	198	10	M8x1
C25-SFS12-250	12	18	23	25	250	47	192	10	M10x1
C25-SFS16-250	16	22	24.8	25	250	50	192	10	M12x1
C20-SFS06-300	6	12	16	20	300	36	248	10	M5
C20-SFS08-300	8	14	19	20	300	36	248	10	M6
C20-SFS10-300	10	16	19.8	20	300	42	248	10	M8x1
C25-SFS12-300	12	18	23	25	300	47	242	10	M10x1
C25-SFS16-300	16	22	24.8	25	300	50	242	10	M12x1



# BT40 热缩刀柄3度, 薄壁C型 BT40 Shrink chuck 3° slim form C



Cat No	D	C	L	M	L1	C1	C2	H	h
BT40-SFA4-95-M42	4	7	95	42	26	11.4	25	12	130
BT40-SFA4-120-M67	4	7	120	67	26	14	25	12	155
BT40-SFA4-125-M42	4	7	125	42	56	11.4	26	12	160
BT40-SFA4-150-M67	4	7	150	67	56	14	25	12	185
BT40-SFA4-150-M97	4	7	150	97	26	17.2	26	12	185
BT40-SFA4-180-M97	4	7	180	97	56	17.2	25	12	215
BT40-SFA6-95-M42	6	9	95	42	26	13.4	25	18	130
BT40-SFA6-120-M67	6	9	120	67	26	16	26	18	155
BT40-SFA6-125-M42	6	9	125	42	56	13.4	25	18	160
BT40-SFA6-150-M67	6	9	150	67	56	16	25	18	185
BT40-SFA6-150-M97	6	9	150	97	26	19.2	36	18	185
BT40-SFA6-180-M97	6	9	180	97	56	19.2	36	18	215
BT40-SFA8-95-M42	8	11	95	42	26	15.4	25	24	130
BT40-SFA8-120-M67	8	11	120	67	26	18	36	24	155
BT40-SFA8-125-M42	8	11	125	42	56	15.4	36	24	160
BT40-SFA8-150-M67	8	11	150	67	56	18	36	24	185
BT40-SFA8-150-M97	8	11	150	97	26	21.2	36	24	185
BT40-SFA8-180-M97	8	11	180	97	56	21.2	36	24	215

Cat No	D	C	L	M	L1	C1	C2	H	h
BT40-SFA10-95-M42	10	13	95	42	26	17.4	25	30	130
BT40-SFA10-120-M67	10	13	120	67	26	20	36	30	155
BT40-SFA10-125-M42	10	13	125	42	56	17.4	36	30	160
BT40-SFA10-150-M67	10	13	150	67	56	20	36	30	185
BT40-SFA10-150-M97	10	13	150	97	26	23.2	36	30	185
BT40-SFA10-180-M97	10	13	180	97	56	23.2	36	30	215
BT40-SFA10-95-M42	12	15	95	42	26	19.4	32	30	130
BT40-SFA10-120-M67	12	16	120	67	26	22	32	30	155
BT40-SFA10-125-M42	12	17	125	42	56	19.4	36	30	160
BT40-SFA10-150-M67	12	18	150	67	56	22	36	30	185
BT40-SFA10-150-M97	12	19	150	97	26	25.2	36	30	185
BT40-SFA10-180-M97	12	22	180	97	56	25.2	36	30	215

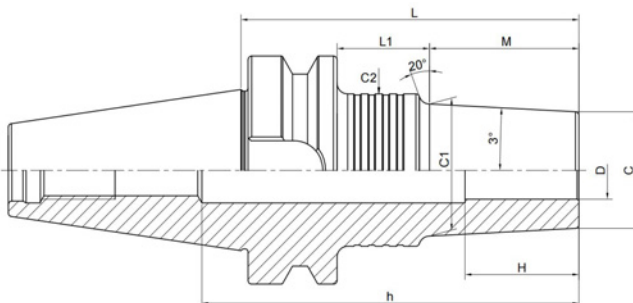
Cat No	D	C	L	M	L1	L2	C1	C2	C3	H	h
BT40-SFA4-155-M42	4	7	155	42	33	53	11.4	26	40	12	190
BT40-SFA4-180-M67	4	7	180	67	33	53	14	26	40	12	215
BT40-SFA4-210-M97	4	7	210	97	33	53	17.2	25	39	12	245
BT40-SFA6-155-M42	6	9	155	42	33	53	13.4	25	39	18	190
BT40-SFA6-180-M67	6	9	180	67	33	53	16	26	40	18	215
BT40-SFA6-210-M97	6	9	210	97	28	58	19.2	36	50	18	245
BT40-SFA8-155-M42	8	11	155	42	33	53	15.4	25	39	24	190
BT40-SFA8-180-M67	8	11	180	67	28	58	18	36	50	24	215
BT40-SFA8-210-M97	8	11	210	97	28	58	21.2	36	50	24	245
BT40-SFA10-155-M42	10	13	155	42	28	58	17.4	36	50	30	190
BT40-SFA10-180-M67	10	13	180	67	28	58	20	36	50	30	215
BT40-SFA10-210-M97	10	13	210	97	28	58	23.2	36	50	30	245
BT40-SFA10-155-M42	12	20	155	42	28	58	19.4	36	50	30	190
BT40-SFA10-180-M67	12	21	180	67	30	56	22	32	46	30	215
BT40-SFA10-210-M97	12	23	210	97	28	58	25.2	36	50	30	245

Cat No	D	C	L	M	L1	L2	C1	C2	C3	H	h
BT50-SFA4-170-M42	4	7	170	42	33	57	11.4	25	39	12	225
BT50-SFA4-195-M67	4	7	195	67	33	57	14	25	39	12	250
BT50-SFA4-225-M97	4	7	225	97	33	57	17.2	26	40	12	280
BT50-SFA6-170-M42	6	9	170	42	33	57	13.4	26	40	18	225
BT50-SFA6-195-M67	6	9	195	67	33	57	16	26	40	18	250
BT50-SFA6-225-M97	6	9	225	97	28	62	19.2	36	50	18	280
BT50-SFA8-170-M42	8	11	170	42	33	57	15.4	25	39	24	225
BT50-SFA8-195-M67	8	11	195	67	28	62	18	36	50	24	250
BT50-SFA8-225-M97	8	11	225	97	28	62	21.2	36	50	24	280
BT50-SFA10-170-M42	10	13	170	42	33	57	17.4	25	39	30	225
BT50-SFA10-195-M67	10	13	195	67	28	62	20	36	50	30	250
BT50-SFA10-225-M97	10	13	225	97	28	62	23.2	36	50	30	280
BT50-SFA12-170-M42	12	15	170	42	30	60	19.4	32	46	30	225
BT50-SFA12-195-M67	12	15	195	67	28	62	22	36	50	30	250
BT50-SFA12-225-M97	12	15	225	97	28	62	25.2	36	50	30	280

Cat No	D	C	L	M	L1	C1	C2	H	h
BT50-SFA4-110-M42	4	7	110	42	30	11.4	26	12	165
BT50-SFA4-135-M67	4	7	135	67	30	14	25	12	190
BT50-SFA4-140-M42	4	7	140	42	60	11.4	25	12	195
BT50-SFA4-165-M67	4	7	165	67	60	14	26	12	220
BT50-SFA4-165-M97	4	7	165	97	30	17.2	25	12	220
BT50-SFA4-195-M97	4	7	195	97	60	17.2	25	12	250
BT50-SFA6-110-M42	6	9	110	42	30	13.4	26	18	165
BT50-SFA6-135-M67	6	9	135	67	30	16	26	18	190
BT50-SFA6-140-M42	6	9	140	42	60	13.4	26	18	195
BT50-SFA6-165-M67	6	9	165	67	60	16	26	18	220
BT50-SFA6-165-M97	6	9	165	97	30	19.2	36	18	220
BT50-SFA6-195-M97	6	9	195	97	60	19.2	36	18	250
BT50-SFA8-110-M42	8	11	110	42	30	15.4	25	24	165
BT50-SFA8-135-M67	8	11	135	67	30	18	36	24	190
BT50-SFA8-140-M42	8	11	140	42	60	15.4	36	24	195
BT50-SFA8-165-M67	8	11	165	67	60	18	32	24	220
BT50-SFA8-165-M97	8	11	165	97	30	21.2	36	24	220
BT50-SFA8-195-M97	8	11	195	97	60	21.2	36	24	250

Cat No	D	C	L	M	L1	C1	C2	H	h
BT50-SFA10-110-M42	10	13	110	42	30	17.4	25	30	165
BT50-SFA10-135-M67	10	13	135	67	30	20	36	30	190
BT50-SFA10-140-M42	10	13	140	42	60	17.4	36	30	195
BT50-SFA10-165-M67	10	13	165	67	60	20	36	30	220
BT50-SFA10-165-M97	10	13	165	97	30	23.2	36	30	220
BT50-SFA10-195-M97	10	13	195	97	60	23.2	32	30	250
BT50-SFA12-110-M42	12	15	110	42	30	19.4	32	30	165
BT50-SFA12-135-M67	12	15	135	67	30	22	36	30	190
BT50-SFA12-140-M42	12	15	140	42	60	19.4	36	30	195
BT50-SFA12-165-M67	12	15	165	67	60	22	32	30	220
BT50-SFA12-165-M97	12	15	165	97	30	25.2	36	30	220
BT50-SFA12-195-M97	12	15	195	97	60	25.2	36	30	250

## BT40 热缩刀柄3度，薄壁C型 BT40 Shrink chuck 3° slim form C



Cat No	D	C	L	M	L1	C1	C2	H	h
BT40-SFA6-95-M42	6	10	95	42	26	14.4	25	18	130
BT40-SFA6-120-M67	6	10	120	67	26	17	25	18	155
BT40-SFA6-125-M42	6	10	125	42	56	14.4	25	18	160
BT40-SFA6-150-M67	6	10	150	67	56	17	25	18	185
BT40-SFA6-150-M97	6	10	150	97	26	20.2	32	18	185
BT40-SFA6-180-M97	6	10	180	97	56	20.2	36	18	215
BT40-SFA6-180-M127	6	10	180	127	26	23.3	36	18	215
BT40-SFA6-210-M157	6	10	210	127	56	23.3	36	18	245
BT40-SFA6-210-M157	6	10	210	157	26	26.5	36	18	245
BT40-SFA6-240-M157	6	10	240	157	56	26.5	36	18	275
BT40-SFA8-95-M42	8	13	95	42	26	17.4	32	24	130
BT40-SFA8-120-M67	8	13	120	67	26	20	32	24	155
BT40-SFA8-125-M42	8	13	125	42	56	17.4	36	24	160
BT40-SFA8-150-M67	8	13	150	67	56	20	36	24	185
BT40-SFA8-150-M97	8	13	150	97	26	23.2	32	24	185
BT40-SFA8-180-M97	8	13	180	97	56	23.2	36	24	215
BT40-SFA8-180-M127	8	13	180	127	26	26.3	36	24	215
BT40-SFA8-210-M127	8	13	210	127	56	26.3	36	24	245
BT40-SFSC8-210-M157	8	13	210	157	26	29.5	36	24	245
BT40-SFA8-240-M157	8	13	240	157	56	29.5	36	24	275
BT40-SFA10-95-M42	10	16	95	42	26	20.4	32	30	130
BT40-SFA10-120-M67	10	16	120	67	26	23	36	30	155
BT40-SFA10-125-M42	10	16	125	42	56	20.4	36	30	160
BT40-SFA10-150-M67	10	16	150	67	56	23	32	30	185
BT40-SFA10-150-M97	10	16	150	97	26	26.2	32	30	185
BT40-SFA10-180-M97	10	16	150	97	56	26.2	36	30	215

Cat No	D	C	L	M	L1	C1	C2	H	h
BT40-SFA10-180-M127	10	16	180	127	26	29.3	50	30	190
BT40-SFA10-210-M127	10	16	210	127	56	29.3	50	30	220
BT40-SFA10-210-M157	10	16	210	157	26	32.5	50	30	220
BT40-SFA10-240-M127	10	16	240	127	86	29.3	50	30	250
BT40-SFA10-240-M157	10	16	240	157	56	32.5	50	30	250
BT40-SFA10-270-M157	10	16	270	157	86	32.5	50	30	305
BT40-SFA12-95-M42	12	19	95	42	26	23.4	32	30	130
BT40-SFA12-120-M67	12	19	120	67	26	26	36	30	155
BT40-SFA12-125-M42	12	19	125	42	56	23.4	36	30	160
BT40-SFA12-150-M67	12	19	150	67	56	26	36	30	185
BT40-SFA12-150-M97	12	19	150	97	26	29.2	50	30	160
BT40-SFA12-180-M97	12	19	180	97	56	29.2	50	30	190
BT40-SFA12-180-M127	12	19	180	127	26	32.3	50	30	190
BT40-SFA12-210-M97	12	19	210	97	86	29.2	50	30	220
BT40-SFA12-210-M127	12	19	210	127	56	32.3	50	30	220
BT40-SFA12-210-M157	12	19	210	157	26	35.5	50	30	220
BT40-SFA12-240-M127	12	19	240	127	86	32.3	50	30	250
BT40-SFA12-240-M157	12	19	240	157	56	35.5	50	30	250
BT40-SFA12-270-M157	12	19	270	157	86	35.5	50	30	280
BT40-SFA16-95-M42	16	24	95	42	26	28.4	42	32	96
BT40-SFA16-120-M67	16	24	120	67	26	31	42	32	96
BT40-SFA16-125-M42	16	24	125	42	56	28.4	50	32	96
BT40-SFA16-150-M67	16	24	150	67	56	31	42	32	96
BT40-SFA16-150-M97	16	24	150	97	26	34.2	50	32	96
BT40-SFA16-155-M42	16	24	155	42	86	28.2	50	32	96
BT40-SFA16-180-M67	16	24	180	67	86	31	50	32	96
BT40-SFA16-180-M97	16	24	180	97	56	34.2	50	32	96

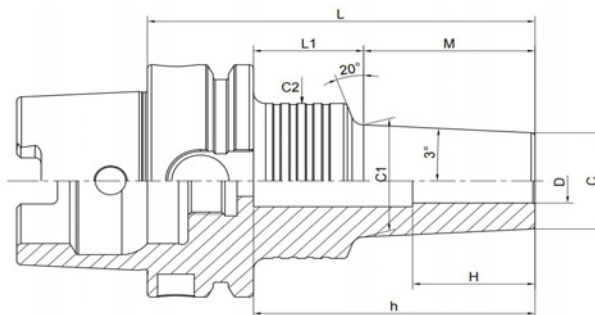
Cat No	D	C	L	M	L1	C1	C2	H	h
BT40-SFA16-180-M127	16	24	180	127	26	37.3	50	32	96
BT40-SFA16-210-M97	16	24	210	97	86	34.2	50	32	96
BT40-SFA16-210-M127	16	24	210	127	56	37.3	50	32	96
BT40-SFA16-210-M157	16	24	210	157	26	40.5	50	32	96
BT40-SFA16-240-M127	16	24	240	127	86	37.3	53	32	96
BT40-SFA16-240-M157	16	24	240	157	56	40.5	50	32	96
BT40-SFA16-270-M157	16	24	270	157	86	40.5	50	32	96
BT40-SFA20-95-M42	20	29	95	42	26	33.4	42	40	105
BT40-SFA20-120-M67	20	29	120	67	26	36	42	40	120
BT40-SFA20-125-M42	20	29	125	42	56	33.4	50	40	120
BT40-SFA20-150-M67	20	29	150	67	56	36	50	40	120
BT40-SFA20-150-M97	20	29	150	97	26	39.2	50	40	120
BT40-SFA20-180-M67	20	29	180	67	86	26	50	40	120
BT40-SFA20-180-M97	20	29	180	97	56	39.2	50	40	120
BT40-SFA20-180-M127	20	29	180	127	26	42.3	50	40	120
BT40-SFA20-210-M97	20	29	210	97	86	39.2	50	40	120
BT40-SFA20-210-M127	20	29	210	127	56	42.3	50	40	120
BT40-SFA20-210-M157	20	29	210	157	26	45.5	50	40	120
BT40-SFA20-240-M127	20	29	240	127	86	42.3	50	40	120
BT40-SFA20-240-M157	20	29	240	157	56	45.5	50	40	120
BT40-SFA20-270-M157	20	29	270	157	86	45.5	50	40	120

Cat No	D	C	L	M	L1	L2	C1	C2	C3	H	h
BT40-SFA6-155-M42	6	10	155	42	33	53	14.4	26	40	18	190
BT40-SFA6-180-M67	6	10	180	67	33	53	17	25	39	18	215
BT40-SFA6-210-M97	6	10	210	97	28	58	20.2	36	50	18	245
BT40-SFA6-240-M127	6	10	240	127	28	58	23.3	36	50	18	275
BT40-SFA6-270-M157	6	10	270	157	28	58	26.5	36	50	18	305
BT40-SFA8-155-M42	8	13	155	42	30	56	17.4	32	46	24	190
BT40-SFA8-180-M67	8	13	180	67	28	58	20	36	50	24	215
BT40-SFA8-210-M97	8	13	210	97	28	58	23.2	36	50	24	245
BT40-SFA8-240-M127	8	13	240	127	28	58	26.3	36	50	24	275
BT40-SFA8-270-M157	8	13	270	157	28	58	29.5	42	53	24	305
BT40-SFA10-155-M42	10	16	155	42	28	58	20.4	36	50	30	190
BT40-SFA10-180-M67	10	16	180	67	28	58	23	36	50	30	215
BT40-SFA10-210-M97	10	16	210	97	28	58	26.2	36	50	30	245
BT40-SFA12-155-M42	12	19	155	42	28	58	23.4	36	50	30	190
BT40-SFA12-180-M67	12	19	180	67	28	58	26	36	50	30	215
BT40-SFA20-155-M42	20	29	155	42	28	58	33.4	42	53	40	120

Cat No	D	C	L	M	L1	C1	C2	H	h
BT40-SFR 6-75-M22	6	14	75	22	26	16.3	32	18	110
BT40-SFR 6-95-M42	6	14	95	42	26	18.4	32	18	130
BT40-SFR 6-105-M22	6	14	105	22	56	16.3	36	18	140
BT40-SFR 6-120-M67	6	14	120	67	26	21	32	18	155
BT40-SFR 6-125-M42	6	14	125	42	56	18.4	32	18	160
BT40-SFR 6-150-M67	6	14	150	67	56	21	32	18	185
BT40-SFR 8-75-M22	8	18	75	22	26	20.3	32	24	110
BT40-SFR 8-95-M42	8	18	95	42	26	22.4	36	24	130
BT40-SFR 8-105-M22	8	18	105	22	56	20.3	36	24	140
BT40-SFR 8-120-M67	8	18	120	67	26	25	36	24	155
BT40-SFR 8-125-M42	8	18	125	42	56	22.4	36	24	160
BT40-SFR 8-150-M67	8	18	150	67	56	25	36	24	185
BT40-SFR 10-75-M22	10	22	75	22	26	24.3	32	30	110
BT40-SFR 10-95-M42	10	22	95	42	26	26.4	32	30	130
BT40-SFR 10-105-M22	10	22	105	22	56	24.3	32	30	140
BT40-SFR 10-120-M67	10	22	120	67	26	29	36	30	155
BT40-SFR 10-125-M42	10	22	125	42	56	26.4	36	30	160
BT40-SFR 10-150-M67	10	22	150	67	56	29	38	30	185

# HSK-A 热缩刀柄3度, 薄壁C型

## HSK-A Shrink chuck 3° slim form C



Cat No	D	C	L	M	L1	C1	C2	H	h
HSK40A-SFA3-65-M22	3	6	65	22	23	8.3	25	9	44
HSK40A-SFA3-85-M42	3	6	85	42	23	10.4	25	9	64
HSK40A-SFA3-100-M42	3	6	100	42	38	10.4	25	9	78
HSK40A-SFA4-65-M22	4	7	65	22	23	9.3	25	12	44
HSK40A-SFA4-85-M42	4	7	85	42	23	11.4	25	12	64
HSK40A-SFA4-100-M42	4	7	100	42	38	11.4	25	12	78
HSK40A-SFA6-65-M22	6	9	65	22	23	11.3	25	18	36
HSK40A-SFA6-85-M42	6	9	85	42	23	13.4	25	18	36
HSK40A-SFA6-100-M42	6	9	100	42	38	13.4	25	18	36
HSK40A-SFA8-65-M22	8	11	65	22	23	13.3	25	24	44
HSK40A-SFA8-85-M42	8	11	85	42	23	15.4	25	24	48
HSK40A-SFA8-100-M42	8	11	100	42	38	15.4	25	24	48
HSK40A-SFA10-65-M22	10	13	65	22	23	15.3	25	30	44
HSK40A-SFA10-85-M42	10	13	85	42	23	17.4	25	30	60
HSK40A-SFA10-100-M42	10	13	100	42	38	17.4	25	30	60
HSK40A-SFA12-65-M22	12	15	65	22	23	17.3	25	30	44
HSK40A-SFA12-90-M42	12	15	90	42	28	19.4	32	30	68
HSK50A-SFA3-95-M42	3	6	95	42	27	10.4	25	9	69
HSK50A-SFA3-125-M42	3	6	125	42	57	10.4	25	9	100
HSK50A-SFA4-95-M42	4	7	95	42	27	11.4	26	12	69
HSK50A-SFA4-125-M42	4	7	125	42	57	11.4	25	12	100
HSK50A-SFA6-95-M42	6	9	95	42	27	13.4	26	18	69
HSK50A-SFA6-125-M42	6	9	125	42	57	13.4	25	18	100
HSK50A-SFA8-95-M42	8	11	95	42	27	15.4	25	24	48
HSK50A-SFA8-125-M42	8	11	125	42	57	15.4	25	24	48
HSK50A-SFA10-95-M42	10	13	95	42	27	17.4	25	30	60
HSK50A-SFA10-125-M42	10	13	125	42	57	17.4	25	30	60
HSK63A-SFA4-95-M42	4	7	95	42	27	11.4	25	12	70
HSK63A-SFA4-120-M67	4	7	120	67	27	14	25	12	95
HSK63A-SFA4-125-M42	4	7	125	42	57	11.4	25	12	100
HSK63A-SFA4-150-M67	4	7	150	67	57	14	25	12	125
HSK63A-SFA4-150-M97	4	7	150	97	27	17.2	25	12	125
HSK63A-SFA4-180-M97	4	7	180	97	57	17.2	26	12	155
HSK63A-SFA6-95-M42	6	9	95	42	27	13.4	25	18	70
HSK63A-SFA6-120-M67	6	9	120	67	27	16	25	18	95
HSK63A-SFA6-125-M42	6	9	125	42	57	13.4	25	18	100
HSK63A-SFA6-150-M67	6	9	150	67	57	16	26	18	125
HSK63A-SFA6-150-M97	6	9	150	97	27	19.2	32	18	125
HSK63A-SFA6-180-M97	6	9	180	97	57	19.2	36	18	155
HSK63A-SFA8-95-M42	8	11	95	42	27	15.4	36	24	70
HSK63A-SFA8-120-M67	8	11	120	67	27	18	36	24	95
HSK63A-SFA8-125-M42	8	11	125	42	57	15.4	36	24	100
HSK63A-SFA8-150-M67	8	11	150	67	57	18	36	24	125
HSK63A-SFA8-150-M97	8	11	150	97	27	21.2	36	24	125
HSK63A-SFA8-180-M97	8	11	180	97	57	21.2	36	24	155
HSK63A-SFA10-95-M42	10	13	95	42	27	17.4	36	30	60
HSK63A-SFA10-120-M67	10	13	120	67	27	20	36	30	60
HSK63A-SFA10-125-M42	10	13	125	42	57	17.4	36	30	60
HSK63A-SFA10-150-M67	10	13	150	67	57	20	36	30	60
HSK63A-SFA10-150-M97	10	13	150	97	27	23.2	36	30	60
HSK63A-SFA10-180-M97	10	13	180	97	57	23.2	36	30	60
HSK63A-SFA12-95-M42	12	15	95	42	27	19.4	36	30	68
HSK63A-SFA12-120-M67	12	15	120	67	27	22	36	30	72
HSK63A-SFA12-125-M42	12	15	125	42	57	19.4	36	30	72
HSK63A-SFA12-150-M67	12	15	150	67	57	22	32	30	72
HSK63A-SFA12-150-M97	12	15	150	97	27	25.2	36	30	72
HSK63A-SFA12-180-M97	12	15	180	97	57	25.2	36	30	72

Cat No	D	C	L	M	L1	L2	C1	C2	C3	H	h
HSK63A-SFA4-155-M42	4	7	155	42	33	54	11.4	25	39	12	130
HSK63A-SFA4-180-M67	4	7	180	67	33	54	14	26	40	12	155
HSK63A-SFA4-210-M97	4	7	210	97	33	54	17.2	25	39	12	185
HSK63A-SFA6-155-M42	6	9	155	42	33	54	13.4	25	39	18	130
HSK63A-SFA6-180-M67	6	9	180	67	33	54	16	26	40	18	155
HSK63A-SFA6-210-M97	6	9	210	97	28	59	19.2	36	50	18	185
HSK63A-SFA8-155-M42	8	11	155	42	33	54	15.4	25	39	24	130
HSK63A-SFA8-180-M67	8	11	180	67	30	57	18	32	46	24	155
HSK63A-SFA8-210-M97	8	11	210	97	28	59	21.2	36	50	24	185
HSK63A-SFA10-155-M42	10	13	155	42	33	54	17.4	25	39	30	60
HSK63A-SFA10-180-M67	10	13	180	67	30	57	20	32	46	30	60
HSK63A-SFA10-210-M97	10	13	210	97	30	57	23.2	32	46	30	60
HSK63A-SFA12-155-M42	12	15	155	42	30	57	19.4	32	46	30	72
HSK63A-SFA12-180-M67	12	15	180	67	30	57	22	32	46	30	72
HSK63A-SFA12-210-M97	12	15	210	97	30	57	25.2	32	46	30	72

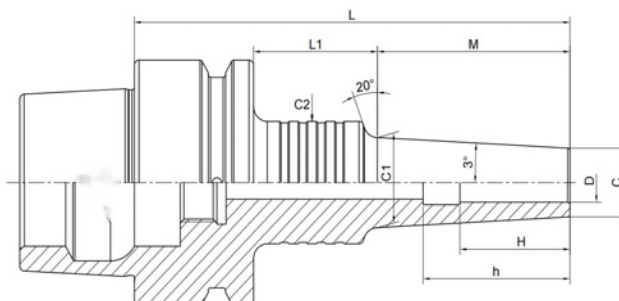
Cat No	D	C	L	M	L1	L2	C1	C2	C3	H	h
HSK100A-SFA4-110-M42	4	7	110	42	39	.	11.4	26	.	12	80
HSK100A-SFA4-135-M67	4	7	135	67	39	.	14	26	.	12	105
HSK100A-SFA4-165-M67	4	7	165	67	69	.	14	26	.	12	135
HSK100A-SFA4-165-M97	4	7	165	97	39	.	17.2	26	.	12	135
HSK100A-SFA4-195-M97	4	7	195	97	69	.	17.2	25	.	12	165
HSK100A-SFA6-110-M42	6	9	110	42	39	.	13.4	25	.	18	80
HSK100A-SFA6-135-M67	6	9	135	67	39	.	16	25	.	18	105
HSK100A-SFA6-140-M42	6	9	140	42	69	.	13.4	25	.	18	110
HSK100A-SFA6-165-M67	6	9	165	67	69	.	16	25	.	18	135
HSK100A-SFA6-165-M97	6	9	165	97	39	.	19.2	36	.	18	135
HSK100A-SFA6-195-M97	6	9	195	97	69	.	19.2	36	.	18	165

Cat No	D	C	L	M	L1	C1	C2	H	h
HSK100A-SFA8-110-M42	8	11	110	42	39	15.4	36	24	80
HSK100A-SFA8-135-M67	8	11	135	67	39	18	32	24	105
HSK100A-SFA8-140-M42	8	11	140	42	69	15.4	36	24	110
HSK100A-SFA8-165-M67	8	11	165	67	69	18	36	24	135
HSK100A-SFA8-165-M97	8	11	165	97	39	21.2	36	24	135
HSK100A-SFSC-195-M97	8	11	195	97	69	21.2	32	24	165
HSK100A-SFA10-110-M42	10	13	110	42	39	17.4	25	30	80
HSK100A-SFA10-135-M67	10	13	135	67	39	20	36	30	105
HSK100A-SFA10-140-M42	10	13	140	42	69	17.4	25	30	110
HSK100A-SFA10-165-M67	10	13	165	67	69	20	36	30	135
HSK100A-SFA10-165-M97	10	13	165	97	39	23.2	36	30	135
HSK100A-SFA10-195-M97	10	13	195	97	69	23.2	36	30	165
HSK100A-SFA12-110-M42	12	15	110	42	39	19.4	32	30	72
HSK100A-SFA12-135-M67	12	15	135	67	39	22	32	30	72
HSK100A-SFA12-140-M42	12	15	140	42	69	19.4	32	30	72
HSK100A-SFA12-165-M67	12	15	165	67	69	22	32	30	72
HSK100A-SFA12-165-M97	12	15	165	97	39	25.2	36	30	72
HSK100A-SFA12-195-M97	12	15	195	97	69	25.2	36	30	72

Cat No	D	C	L	M	L1	L2	C1	C2	C3	H	h
HSK100A-SFA4-170-M42	4	7	170	42	33	66	11.4	26	40	12	140
HSK100A-SFA4-195-M67	4	7	195	67	33	66	14	25	39	12	165
HSK100A-SFA4-225-M97	4	7	225	97	33	66	17.2	25	39	12	195
HSK100A-SFA6-170-M42	6	9	170	42	33	66	13.4	25	39	18	140
HSK100A-SFA6-195-M67	6	9	195	67	33	66	16	26	40	18	165
HSK100A-SFA6-225-M97	6	9	225	97	30	69	19.2	32	46	18	195
HSK100A-SFA8-170-M42	8	11	170	42	28	71	15.4	36	50	24	140
HSK100A-SFA8-195-M67	8	11	195	67	28	71	18	36	50	24	165
HSK100A-SFA8-225-M97	8	11	225	97	28	71	21.2	36	50	24	195
HSK100A-SFA10-170-M42	10	13	170	42	28	71	17.4	36	50	30	140
HSK100A-SFA10-195-M67	10	13	195	67	28	71	20	36	50	30	165
HSK100A-SFA10-225-M97	10	13	225	97	30	69	23.2	32	46	30	195
HSK100A-SFA12-170-M42	12	15	170	42	28	71	19.4	36	50	30	72
HSK100A-SFA12-195-M67	12	15	195	67	30	69	22	32	46	30	72
HSK100A-SFA12-225-M97	12	15	225	97	28	71	25.2	36	50	30	72



# HSK-E 热缩刀柄3度, 薄壁C型 HSK-E Shrink chuck 3° slim form C



Cat No	D	C	L	M	L1	C1	C2	H	h
HSK32E-SFA3-50-M22	3	6	50	22	8	8.3	20	9	42
HSK32E-SFA3-70-M42	3	6	70	42	8	10.4	20	9	62
HSK32E-SFA3-85-M42	3	6	85	42	23	10.4	25	9	69
HSK32E-SFASA4-50-M22	4	7	50	22	8	9.3	20	12	35
HSK32E-SFA4-70-M42	4	7	70	42	8	11.4	20	12	54
HSK32E-SFA4-85-M42	4	7	85	42	23	11.4	25	12	69
HSK32E-SFA6-70-M42	6	9	70	42	8	13.4	20	18	54
HSK40E-SFA3-50-M22	3	6	50	22	8	8.3	20	9	42
HSK40E-SFA3-70-M42	3	6	70	42	8	10.4	20	9	62
HSK40E-SFA3-85-M42	3	6	85	42	23	10.4	25	9	69
HSK40E-SFA3-110-M67	3	6	110	67	23	13	25	9	94
HSK40E-SFA4-50-M22	4	7	50	22	8	9.3	20	12	42
HSK40E-SFA4-70-M42	4	7	70	42	8	11.4	20	12	62
HSK40E-SFA4-85-M42	4	7	85	42	23	11.4	25	12	74
HSK40E-SFA4-110-M67	4	7	110	67	23	14	25	12	88
HSK40E-SFA6-50-M22	6	9	50	22	8	11.3	20	18	36
HSK40E-SFA6-70-M42	6	9	70	42	8	13.4	20	18	36
HSK40E-SFA6-85-M42	6	9	85	42	23	13.4	25	18	36
HSK40E-SFA6-110-M67	6	9	110	67	23	16	25	18	36
HSK40E-SFA8-60-M22	8	11	60	22	18	13.3	26	24	48
HSK40E-SFA8-80-M42	8	11	80	42	18	15.4	26	24	48
HSK40E-SFA8-100-M42	8	11	100	42	38	15.4	25	24	48

Cat No	D	C	L	M	L1	C1	C2	H	h
HSK40E-SFA10-60-M22	10	13	60	22	18	15.3	26	30	49
HSK40E-SFA10-80-M42	10	13	80	42	18	17.4	26	30	60
HSK40E-SFA10-100-M42	10	13	100	42	38	17.4	25	30	60
HSK40E-SFA3-50-M22	3	7.5	50	22	8	9.8	20	9	42
HSK40E-SFA3-70-M42	3	7.5	70	42	8	11.9	20	9	62
HSK40E-SFA3-85-M42	3	7.5	85	42	23	11.9	25	9	69
HSK40E-SFA3-110-M67	3	7.5	110	67	23	14.5	25	9	94
HSK40E-SFA4-50-M22	4	10	50	22	8	12.3	20	12	42
HSK40E-SFA4-70-M42	4	10	70	42	8	14.4	20	12	62
HSK40E-SFA4-85-M42	4	10	85	42	23	14.4	25	12	69
HSK40E-SFA4-110-M67	4	10	110	67	23	17	25	12	94
HSK40E-SFA6-50-M22	6	12	50	22	8	14.3	26	18	36
HSK40E-SFA6-70-M42	6	12	70	42	8	16.4	26	18	36
HSK40E-SFA6-85-M42	6	12	85	42	23	16.4	25	18	36
HSK40E-SFA6-110-M67	6	12	110	67	23	19	25	18	36
HSK40E-SFA8-50-M22	8	14	50	22	8	16.3	26	20	48
HSK40E-SFA8-85-M42	8	14	85	42	23	18.4	25	24	48
HSK40E-SFA8-100-M42	8	14	100	42	38	18.4	25	24	48
HSK40E-SFA10-55-M22	10	16	55	22	13	18.3	26	25	60
HSK40E-SFA10-85-M42	10	16	85	42	23	20.4	25	30	60
HSK40E-SFA10-100-M42	10	16	100	42	38	20.4	25	30	60
HSK40E-SFA12-55-M22	12	20	55	22	13	22.3	30	25	44
HSK40E-SFA12-85-M42	12	20	85	42	23	24.4	32	30	72
HSK40E-SFA16-55-M22	16	26	55	22	13	28.3	34	32	44
HSK40E-SFA20-60-M40	20	32	60	40	-	34	-	38	49

Cat No	D	C	L	M	L1	C1	C2	H	h
HSK50E-SFA3-60-M22	3	6	60	22	12	8.3	20	9	50
HSK50E-SFA3-75-M22	3	6	75	22	27	8.3	25	9	61
HSK50E-SFA3-80-M42	3	6	80	42	12	10.4	20	9	70
HSK50E-SFA3-95-M42	3	6	95	42	27	10.4	25	9	81
HSK50E-SFA4-60-M22	4	7	60	22	12	9.3	20	12	50
HSK50E-SFA4-75-M22	4	7	75	22	27	9.3	25	12	61
HSK50E-SFA4-80-M42	4	7	80	42	12	11.4	20	12	70
HSK50E-SFA4-95-M42	4	7	95	42	27	11.4	25	12	85
HSK50E-SFA6-60-M22	6	9	60	22	12	11.3	20	18	42
HSK50E-SFA6-75-M22	6	9	75	22	27	11.3	25	18	61
HSK50E-SFA6-80-M42	6	9	80	42	12	13.4	20	18	62
HSK50E-SFA6-95-M42	6	9	95	42	27	13.4	25	18	81
HSK50E-SFA6-120-M67	6	9	120	67	27	16	25	18	106
HSK50E-SFA6-150-M97	6	9	150	97	27	19.2	32	18	135
HSK50E-SFA8-65-M22	8	11	65	22	17	13.3	26	24	39
HSK50E-SFA8-75-M22	8	11	75	22	27	15.4	25	24	48
HSK50E-SFA8-85-M42	8	11	85	42	17	15.4	26	24	48
HSK50E-SFA8-95-M42	8	11	95	42	27	15.4	25	24	48
HSK50E-SFA8-120-M67	8	11	120	67	27	18	32	24	48
HSK50E-SFA8-150-M97	8	11	150	97	27	21.2	32	24	48
HSK50E-SFA10-65-M22	10	13	65	22	17	15.3	26	30	39
HSK50E-SFA10-75-M22	10	13	75	22	27	15.3	25	30	49
HSK50E-SFA10-85-M42	10	13	85	42	17	17.4	26	30	59
HSK50E-SFA10-95-M42	10	13	95	42	27	17.4	25	30	60
HSK50E-SFA10-120-M67	10	13	120	67	27	20	32	30	60
HSK50E-SFA10-150-M97	10	13	150	97	27	23.2	32	30	60
HSK50E-SFA12-65-M22	12	15	65	22	17	17.3	26	25	39
HSK50E-SFA12-75-M22	12	15	75	22	27	17.3	25	30	49
HSK50E-SFA12-85-M42	12	15	85	42	17	19.4	26	30	59
HSK50E-SFA12-95-M42	12	15	95	42	27	19.4	32	30	69
HSK50E-SFA12-120-M67	12	15	120	67	27	22	32	30	72

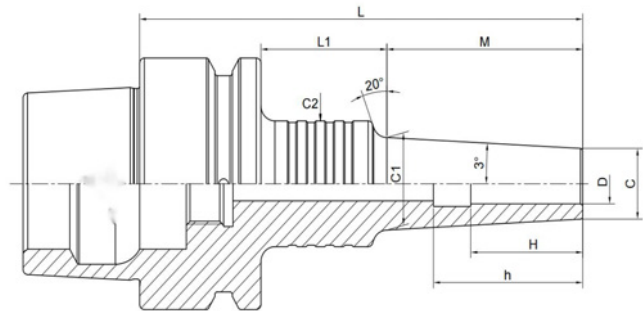
Cat No	D	C	L	M	L1	C1	C2	H	h
HSK50E-SFS6-95-M42	6	10	95	42	27	14.4	25	18	77
HSK50E-SFS6-120-M67	6	10	120	67	27	17	25	18	102
HSK50E-SFS6-150-M97	6	10	150	97	27	20.2	32	18	135
HSK50E-SFS8-95-M42	8	13	95	42	27	17.4	32	24	48
HSK50E-SFS8-120-M67	8	13	120	67	27	20	32	24	48
HSK50E-SFS8-150-M97	8	13	150	97	27	23.2	32	24	48
HSK50E-SFS10-95-M42	10	16	95	42	27	20.4	32	30	60
HSK50E-SFS10-120-M67	10	16	120	67	27	23	32	30	60
HSK50E-SFS10-150-M97	10	16	150	97	27	26.2	32	30	60
HSK50E-SFS12-95-M42	12	19	95	42	27	23.4	32	30	69
HSK50E-SFS12-120-M67	12	19	120	67	27	26	32	30	72
HSK50E-SFS12-150-M97	12	19	150	97	27	29.2	32	30	72
HSK50E-SFS16-95-M42	16	24	95	42	27	28.4	42	32	69
HSK50E-SFS16-120-M67	16	24	120	67	27	31	42	32	94
HSK50E-SFS20-95-M42	20	29	95	42	27	33.4	42	40	69

Cat No	D	C	L	M	L1	C1	C2	H	h
HSK32E-SFE3-70-M42	3	7.5	70	42	8	11.9	20	9	62
HSK32E-SFE3-85-M42	3	7.5	85	42	23	11.9	25	9	69
HSK32E-SFE4-50-M22	4	10	50	22	8	12.3	20	12	35
HSK32E-SFE4-70-M42	4	10	70	42	8	14.4	20	12	54
HSK32E-SFE4-85-M42	4	10	85	42	23	14.4	25	12	69
HSK32E-SFE6-50-M22	6	12	50	22	8	14.3	26	18	39
HSK32E-SFE6-70-M42	6	12	70	42	8	16.4	26	18	54
HSK32E-SFE6-85-M42	6	12	85	42	23	16.4	25	18	69
HSK32E-SFE8-50-M22	8	14	50	22	8	16.3	26	20	39
HSK32E-SFE8-85-M42	8	14	85	42	23	18.4	25	24	48
HSK32E-SFE10-55-M22	10	16	55	22	13	18.3	26	25	44
HSK32E-SFE12-55-M22	12	20	55	22	13	22.3	26	25	44
HSK32E-SFE16-55-M35	16	26	55	35	-	-	-	32	44
HSK40E-SFE3-50-M22	3	7.5	50	22	8	9.8	20	9	42
HSK40E-SFE3-70-M42	3	7.5	70	42	8	11.9	20	9	62
HSK40E-SFE3-85-M42	3	7.5	85	42	23	11.9	25	9	69
HSK40E-SFE3-110-M67	3	7.5	110	67	23	14.5	25	9	94
HSK40E-SFE4-50-M22	4	10	50	22	8	12.3	20	12	42
HSK40E-SFE4-70-M42	4	10	70	42	8	14.4	20	12	62
HSK40E-SFE4-85-M42	4	10	85	42	23	14.4	25	12	69
HSK40E-SFE4-110-M67	4	10	110	67	23	17	25	12	94
HSK40E-SFE6-50-M22	6	12	50	22	8	14.3	26	18	36
HSK40E-SFE6-70-M42	6	12	70	42	8	16.4	26	18	36
HSK40E-SFE6-85-M42	6	12	85	42	23	16.4	25	18	36
HSK40E-SFE6-110-M67	6	12	110	67	23	19	25	18	36

Cat No	D	C	L	M	L1	C1	C2	H	h
HSK40E-SFE(I)8-50-M22	8	14	50	22	8	16.3	26	20	48
HSK40E-SFE(I)8-85-M42	8	14	85	42	23	18.4	25	24	48
HSK40E-SFE(I)8-100-M42	8	14	100	42	38	18.4	25	24	48
HSK40E-SFE(I)10-55-M22	10	16	55	22	13	18.3	26	25	60
HSK40E-SFE(I)10-85-M42	10	16	85	42	23	20.4	25	30	60
HSK40E-SFE(I)10-100-M42	10	16	100	42	38	20.4	25	30	60
HSK40E-SFE(I)12-55-M22	12	20	55	22	13	22.3	30	25	44
HSK40E-SFE(I)12-85-M42	12	20	85	42	23	24.4	32	30	72
HSK40E-SFE(I)16-55-M22	16	26	55	22	13	28.3	34	32	44
HSK40E-SFE(I)20-60-M40	20	32	60	40		34		38	49
HSK50E-SFE(I)3-75-M22	3	7.5	75	22	27	9.8	25	9	61
HSK50E-SFE(I)3-95-M42	3	7.5	95	42	27	11.9	25	9	81
HSK50E-SFE(I)3-120-M67	3	7.5	120	67	27	14.5	25	9	106
HSK50E-SFE(I)3-150-M97	3	7.5	150	97	27	17.7	25	9	136
HSK50E-SFE(I)4-75-M22	4	10	75	22	27	12.3	25	12	61
HSK50E-SFE(I)4-95-M42	4	10	95	42	27	14.4	25	12	81
HSK50E-SFE(I)4-120-M67	4	10	120	67	27	17	25	12	106
HSK50E-SFE(I)4-150-M97	4	10	150	97	27	20.2	25	12	135
HSK50E-SFE(I)6-60-M22	6	12	60	22	12	14.3	26	18	44
HSK50E-SFE(I)6-75-M22	6	12	75	22	27	14.3	25	18	61
HSK50E-SFE(I)6-95-M42	6	12	95	42	27	16.4	25	18	81
HSK50E-SFE(I)6-120-M67	6	12	120	67	27	19	25	18	106
HSK50E-SFE(I)8-60-M22	8	14	60	22	12	16.3	26	20	34
HSK50E-SFE(I)8-75-M22	8	14	75	22	27	16.3	25	24	48
HSK50E-SFE(I)8-95-M42	8	14	95	42	27	18.4	25	24	48
HSK50E-SFE(I)10-60-M22	10	16	60	22	12	18.3	26	25	34
HSK50E-SFE(I)10-75-M22	10	16	75	22	27	18.3	25	30	49
HSK50E-SFE(I)12-60-M22	12	20	60	22	12	22.3	26	25	34
HSK50E-SFE(I)12-75-M22	12	20	75	22	27	22.3	25	30	49
HSK50E-SFE(I)16-60-M22	16	26	60	22	12	28.3	34	32	34
HSK50E-SFE(I)20-65-M22	20	32	65	22	17	34.3	40	38	39

Cat No	D	C	L	M	L1	C1	C2	H	h
HSK63F-SFE3-70-M22	3	7.5	70	22	22	9.8	26	9	53
HSK63F-SFE3-75-M22	3	7.5	75	22	27	9.8	25	9	54
HSK63F-SFE3-95-M42	3	7.5	95	42	27	11.9	25	9	78
HSK63F-SFE4-70-M22	4	10	70	22	22	12.3	26	12	53
HSK63F-SFE4-75-M22	4	10	75	22	27	12.3	25	12	58
HSK63F-SFE4-95-M42	4	10	95	42	27	14.4	25	12	73
HSK63F-SFE6-70-M22	6	12	70	22	22	14.3	26	18	36
HSK63F-SFE6-75-M22	6	12	75	22	27	14.3	25	18	36
HSK63F-SFE6-95-M42	6	12	95	42	27	16.4	25	18	36
HSK63F-SFE8-70-M22	8	14	70	22	22	16.3	26	24	44
HSK63F-SFE8-75-M22	8	14	75	22	27	16.3	25	24	48
HSK63F-SFE8-95-M42	8	14	95	42	27	18.4	25	24	48
HSK63F-SFE10-70-M22	10	16	70	22	22	18.3	26	30	44
HSK63F-SFE10-75-M22	10	16	75	22	27	18.3	25	30	49
HSK63F-SFE12-70-M22	12	20	70	22	22	22.3	26	30	44
HSK63F-SFE12-75-M22	12	20	75	22	27	22.3	25	30	49

## HSK-F 热缩刀柄3度，薄壁C型 HSK-F Shrink chuck 3° slim form C



Cat No	D	C	L	M	L1	C1	C2	H	h
HSK63F-SFA3-75-M37	3	6	75	37	12	9.9	26	9	58
HSK63F-SFA3-95-M42	3	6	95	42	27	10.4	25	9	73
HSK63F-SFA4-75-M37	4	7	75	37	12	10.9	26	12	58
HSK63F-SFA4-95-M42	4	7	95	42	27	11.4	25	12	78
HSK63F-SFA6-75-M37	6	9	75	37	12	12.9	26	18	36
HSK63F-SFA6-95-M42	6	9	95	42	27	13.4	25	18	36
HSK63F-SFA8-95-M42	8	11	95	42	27	15.4	25	24	48
HSK63F-SFA10-95-M42	10	13	95	42	27	17.4	25	30	60
HSK63F-SFA12-95-M42	12	15	95	42	27	19.4	32	30	72